

**Participants wishing to speak on a topic should message the meeting moderator. All participants are asked to mute their individual computers at times when they are not speaking to minimize background noise. Join:
<https://us02web.zoom.us/j/89079099353?pwd=ASS0v608PUWja5ZKsd0k3bfjNHYesV.1>*

**NOTICE OF A REGULAR MEETING
BONDURANT PARKS AND RECREATION BOARD
JUNE 19, 2025**

NOTICE IS HEREBY GIVEN that a Regular Meeting of the City Council will be held at 6:00 PM on June 19, 2025, in the Bondurant City Center, 200 Second Street, Northeast, Bondurant, Polk County, Iowa. Said meeting is open, and the public is encouraged to attend.

AGENDA

1. Roll Call
2. Call to Order and Declaring a Quorum
3. Abstentions declared
4. Approval of Minutes
 - a. -March Minutes
5. Perfecting and Approval of the Agenda
6. Guests requesting to address the Parks Board
7. Action Items
 - a. - Natural Fencing at City Park
8. Discussion Items -
 - a. - Disc Golf Installation (Summer/Fall)
 - b. - Silo Commons
 - c. - The Garden Installation at Lake Petocka (Artocka Loop)
 - d. -PIEowa Documentary Discussion and Update
9. Reports and Comments:
 - a. - Fishing Derby Event Report
 - b. -Rails2Trail 1k/5k/10k Event Report
 - c. - Communications & Events Coordinator Report
 - d. - City Administrator Report
10. Adjournment

**Due to the COVID-19 concerns and social distancing recommendations, a virtual meeting was offered.*

Bondurant Parks and Recreation Board
Minutes
March 20, 2025

1. Roll Call

Present: Dennis Lyman, Marian Collison, Emily Karwoski, Seth Williams

Absent: Tessa Simpson, Nic Robinson, Aaron Rasmussen

City Officials Present: City Administrator Marketa Oliver, Communications & Events Coordinator Katie Klus

2. Call to Order and Declaring a Quorum

Dennis Lyman called the meeting to order at 6PM and declared a quorum.

3. Abstentions declared

4. Approval of Minutes

Motion by Lyman, seconded by Collison, to approve the minutes. Vote on Motion 4-0. Motion carried.

- a. -January 2025 Minutes for approval
- b. -February 2025 - Mtg. Cancelled/No minutes

5. Perfecting and Approval of the Agenda

Motion by Lyman, seconded by Collison, to approve the agenda. Vote on Motion 4-0. Motion carried.

6. Guests requesting to address the Parks Board

Jeff Cook (708 Jefferson Ave SE, Bondurant, IA 50035) is inquiring about the discussion of keeping restrooms open year-round. Horton, Public Works Director, has indicated that the restrooms at Petocka and City Park aren't currently built to allow for this. The Board indicated they would be interested in future year-round permanent bathroom options.

Jeff would like to see more polished signs posted when restrooms are open/closed.

Wolf Creek Basketball Court - inquired about progress

7. Action Items

**Due to the COVID-19 concerns and social distancing recommendations, a virtual meeting was offered.*

- a. -Recommend revised shelter rental rates to the City Council
Motion by Collison, seconded by Karwoski, to recommend revised shelter rates to the City Council. Vote on Motion 4-0. Motion carried.

8. Discussion Items -

- a. The Garden
Marketa introduced the two garden concepts, showing two different railing options. The Board is recommending the concept called "Revised The Garden". Jeff Cook mentioned that the planter at the furthest reaching point on the boardwalk would take up valuable fishing real estate. He also verbalized a concern of putting too much maintenance on our Public Works Department.

9. Reports and Comments:

- a. -Cribbage Tournament Event Report
- b. -Bondu Chowder Ride Event Report
- c. -Communications and Events Coordinator Report
 - Collison Playground is to be demolished next week. The new playground is going in mid-April. New benches have also been ordered.
 - ICON is partnering with the Conservation Corps of Minnesota & Iowa to remove invasive woody plants along Mud Creek. This costs the City nothing.
 - Keep Bondu Beautiful is coming up next April 19th in the afternoon. Volunteer sign-ups are ongoing.
 - The new Parks and Rec software should be on-line by end of April.
 - The Live Healthy 5k/1k has been canceled by Live Healthy Iowa. We are still going to be having a 1k/5k/10k, just not in April. We are looking at June. More updates will be coming after Katie meeting with the new Chamber of Commerce Director.

- d. -City Administrator Report
Grant Update:

- | | | | | |
|-------------|-------------------|---------------|----------------|--------|
| Polk County | Sponsorship Grant | Blues & Brews | 2025- February | \$1000 |
| Kwik Star | Sponsorship | Chowder Ride | 2025- February | \$100 |

**Due to the COVID-19 concerns and social distancing recommendations, a virtual meeting was offered.*

IDALS	Water Quality Initiative	The Station Parking	2025- March	\$127,500
MidAmerican Energy	Trees Please!	Trees for City Park	2025- March	\$1,500
Iowa Parks and Recreation Association	Mini Grant	Park Bench at Collison Soccer Park	2025- March	\$1,000

Grain District Update - Arboretum trail goes to bid this year
Construction Updates - Street closures are coming this summer.
Communication will be coming from the City.
Property Tax Updates - Hearing on Monday, our City levy rate has dropped, state-level bills are currently being considered regarding property taxes
New Water Tower has been erected and is to be painted in April.
"The Station" plans are still ongoing and staff are working with FEH to fine-tune the design.

10. Adjournment

Katie Klus
Communication and Events Coordinator

ATTEST:

Dennis Lyman
Board Chair



**BUSINESS OF THE PARKS & RECREATION BOARD
BONDURANT, IOWA
AGENDA STATEMENT**

Item No. 7.a.
For Meeting of 6/19/2025
Discussion Item

TITLE: - Natural Fencing at City Park

CONTACT PERSON:

Katie Klus, Communication & Events Coordinator

BRIEF HISTORY & ANALYSIS: At this meeting, we'd like to discuss a potential natural fencing solution near the basketball court at City Park. We've observed that basketballs frequently roll into the nearby road, creating a safety concern for kids who chase after them. As an alternative to installing a traditional fence, we are exploring the use of tall native grasses to serve as a natural barrier. This approach would help slow or stop balls before they reach the street, while also maintaining the park's open and natural aesthetic. We believe native grasses offer a more attractive and less obtrusive solution than artificial fencing.

FUNDING SOURCE: Bonds (supported by TIF, LOSST) and Grants

STAFF RECOMMENDATION: Provide guidance on next steps.

APPROVED FOR SUBMITTAL:

ATTACHMENTS: None



**BUSINESS OF THE PARKS & RECREATION BOARD
BONDURANT, IOWA
AGENDA STATEMENT**

Item No. 8.a.
For Meeting of 6/19/2025
Discussion Item

TITLE: - Disc Golf Installation (Summer/Fall)

CONTACT PERSON:

Marketa Oliver, ICMA-CM, SPHR, City Administrator
Katie Klus, Communication & Events Coordinator

BRIEF HISTORY & ANALYSIS: This is an update. The council approved an agreement with McClure Engineering Professional Services in the amount of \$8,790 for concept layout, design assistance, and construction staking services related to the Eagle Park Disc Golf Project in December, 2024. The Parks & Recreation Board reviewed this Professional Services Agreement during their November 21, 2024, meeting and voted unanimously for recommended City Council approval. It is anticipated the Eagle Park Disc Golf Course will be installed in 2025.

This project aligns with the 2024 Parks, Trails, & Greenways Master Plan, which recommends the following action for completion by June 2027: "Install the disc golf/multi-golf course at Eagle Park, including constructing additional parking." Additionally, the Eagle Park Disc Golf Course is consistent with the 2022 Eagle Park Master Plan, which includes a draft layout for a 9-hole disc golf course at the park, as shown below. McClure Engineering is expected to further refine this draft layout as they design the proposed course.

It is anticipated the Bondurant City Council will enter into a separate Professional Services Agreement for the design and construction of additional parking at Eagle Park. This parking will be developed in coordination with the disc golf project to address the expected increase in park usage resulting from the Eagle Park Disc Golf Course.

Draft 9-Hole Disc Golf Course included in 2022 Eagle Park Master Plan.



FUNDING SOURCE: LOSST

STAFF RECOMMENDATION: This is a discussion item and update.

APPROVED FOR SUBMITTAL:

ATTACHMENTS: None



**BUSINESS OF THE PARKS & RECREATION BOARD
BONDURANT, IOWA
AGENDA STATEMENT**

Item No. 8.b.
For Meeting of 6/19/2025
Discussion Item

TITLE: - Silo Commons

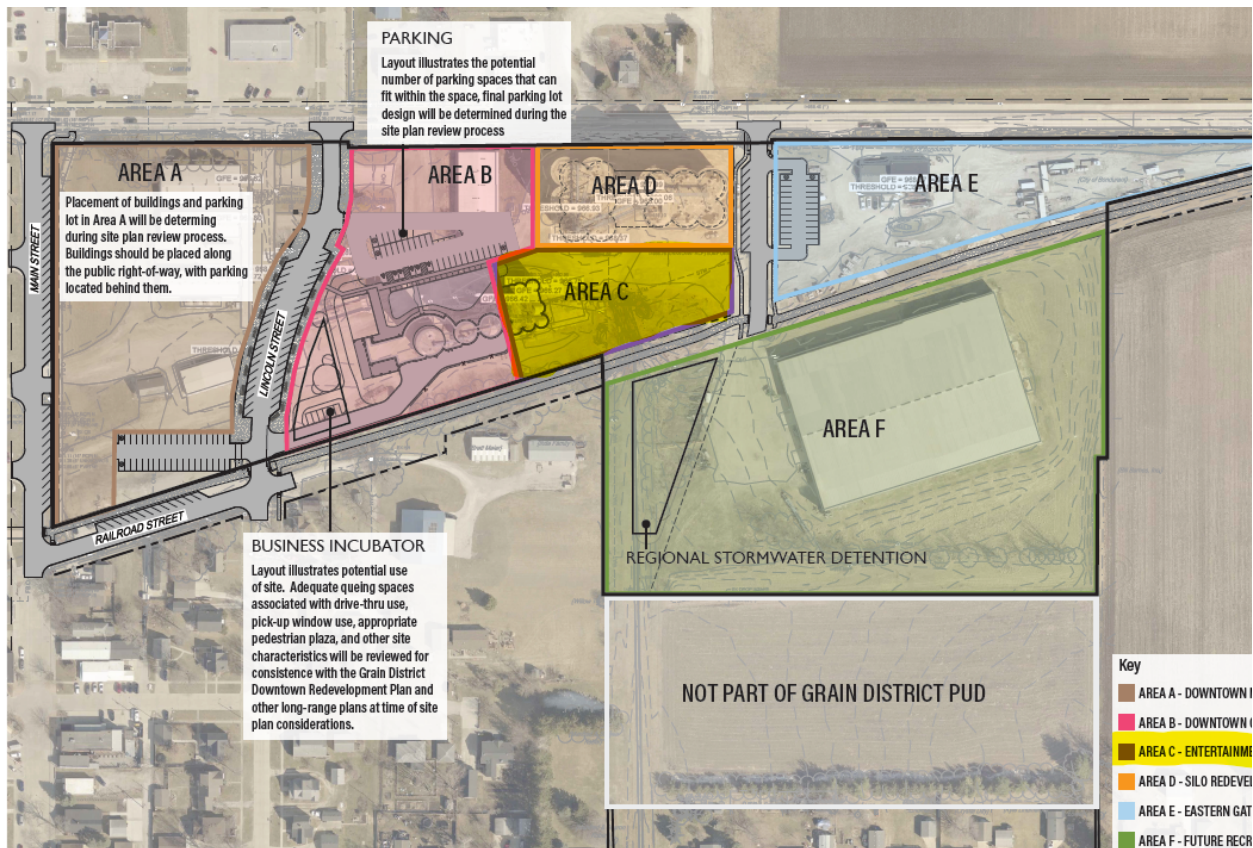
CONTACT PERSON:

Marketa Oliver, ICMA-CM, SPHR, City Administrator
Maggie Murray, Planning & Community Development Director
Katie Klus, Communication & Events Coordinator

BRIEF HISTORY & ANALYSIS:

The City has applied for the Iowa Economic Development Authority's Destination Iowa program, a state-funded initiative designed to support transformational quality-of-life and tourism projects that will attract visitors and new residents to Iowa communities. The program offers grants to assist with vertical infrastructure projects that enhance tourism and community amenities. Rural communities with populations under 20,000, such as Bondurant, are eligible to apply for funding. The program can provide up to 25% of a project's total eligible costs, with a minimum total project cost of \$1.5 million for rural applicants. Projects must be under construction within 12 months of the award and fully funded within six months.

In October 2024, the Bondurant City Council approved a Memorandum of Understanding with The 101 LLC, which includes the donation of approximately one acre of land in the Grain District to the City for the establishment of a community space. This community space is anticipated to be called Silo Commons. This donation aligns with the City's vision to create a vibrant public space that serves as a central community gathering point in the heart of the Grain District.



The City has entered the schematic design phase for Silo Commons and has contracted ISG Inc.—the same firm that authored the *Grain District Downtown Redevelopment Plan*—to lead the design process. Current concepts for the park include an amphitheater structure that will be constructed onto the eastern face of the existing silo pack and an adjacent lawn space designed to accommodate several hundred people during community events. Additional anticipated features include regional play equipment, public parking facilities, and a potential partnership with a rock climbing company to lease a silo wall for climbing operations.

The proposed improvements to Silo Commons are expected to complement other major public and private investments in the area, including the Lincoln Street extension, the extension of the Chichaqua Valley Trail through the District, and the redevelopment of the T-12 building into a distillery and entertainment venue.

Under the Destination Iowa program, the City of Bondurant may request up to 25% of total eligible project costs. To meet the required cost threshold and ensure successful delivery, the City is also actively pursuing additional funding sources to leverage private contributions and maximize impact.

The City has also applied for a \$500,000 Prairie Meadows Legacy grant for this project.

FUNDING SOURCE: Bonds (supported by TIF, LOSST, and Utility funds) and Grants

STAFF RECOMMENDATION: This is an update and discussion item.

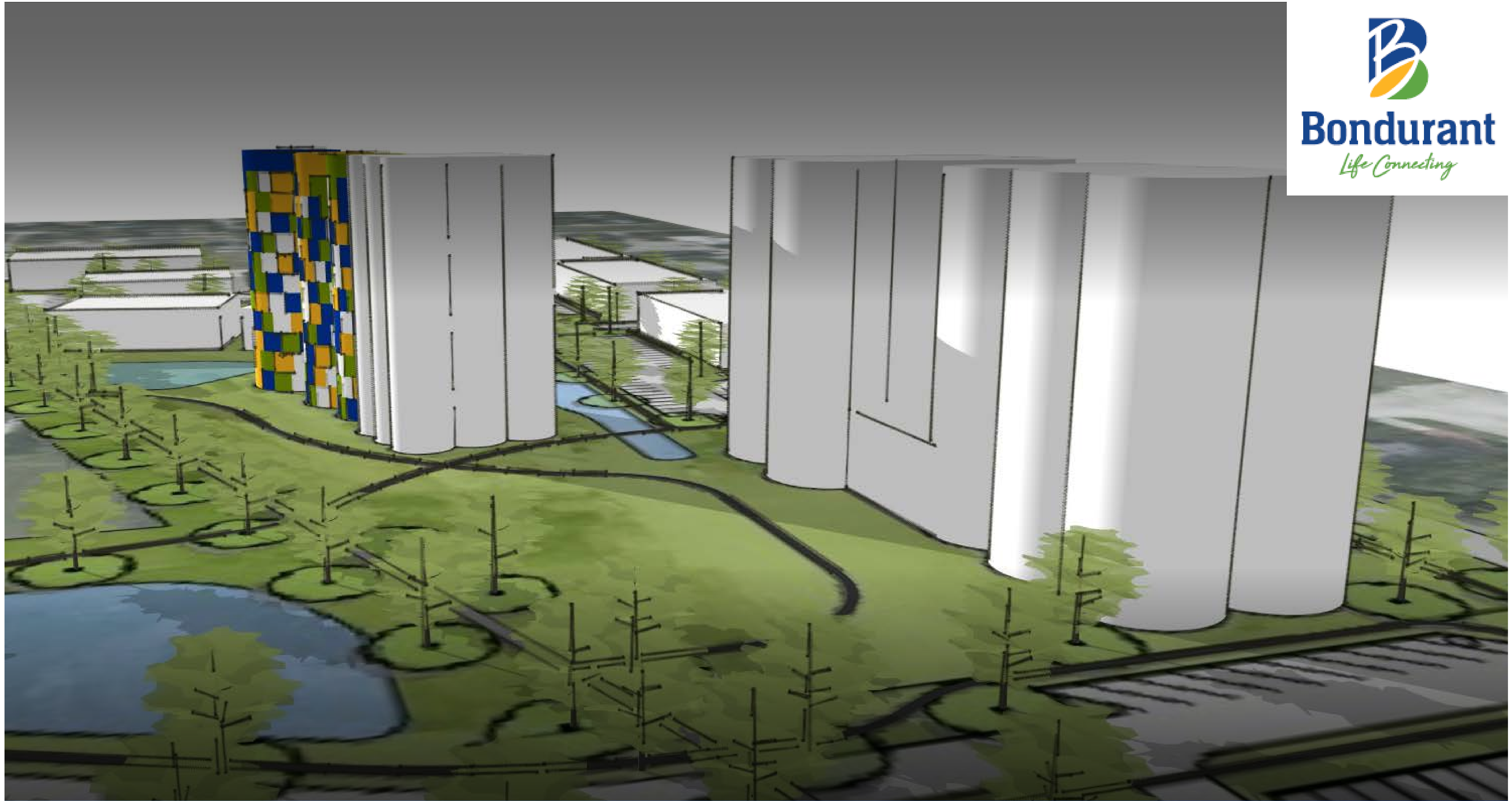
APPROVED FOR SUBMITTAL:

ATTACHMENTS:

- 1. 32109 Silo Commons 05-28-2025 (1)



Bondurant
Life Connecting

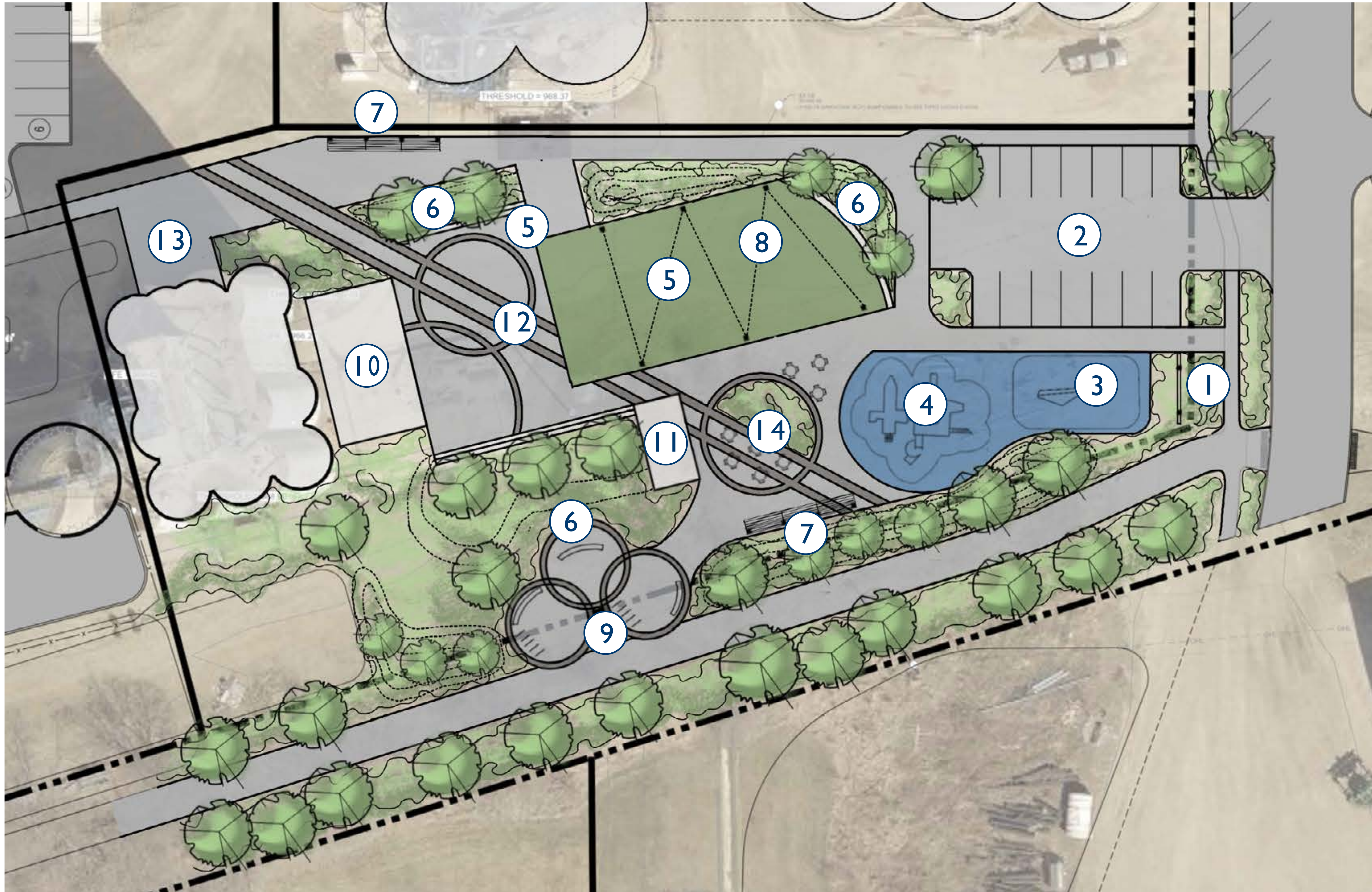


GRAIN DISTRICT SILO COMMONS

Bondurant, Iowa

SILO COMMONS CONCEPT PLAN

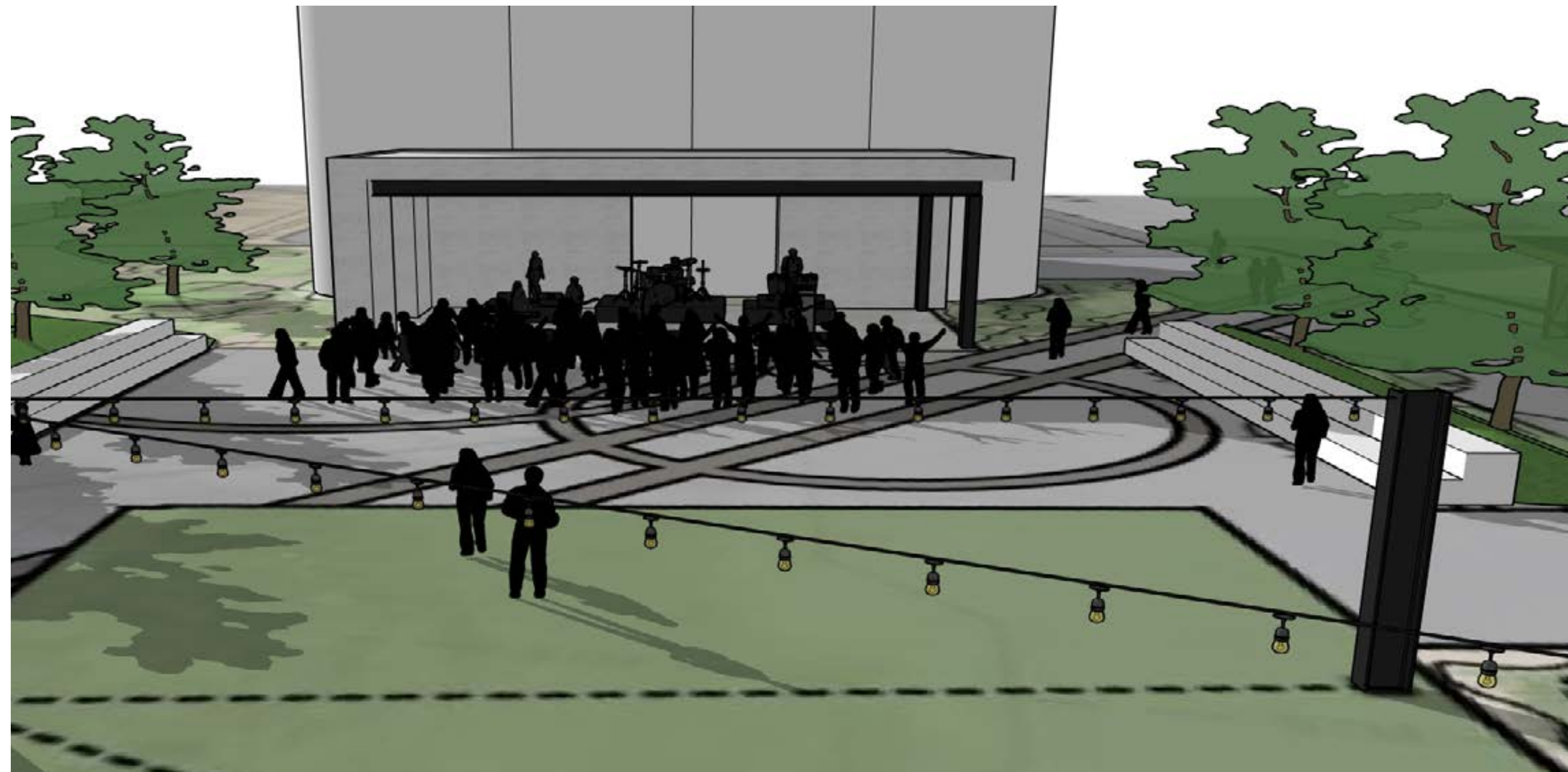
GRAIN DISTRICT



- ① MONUMENT SIGNAGE
- ② GENERAL PARKING
- ③ BOULDERING FEATURE
- ④ TRAIN PLAY FEATURE
- ⑤ EVENT/OPEN LAWN
- ⑥ CAST IN PLACE BENCH SEATING
- ⑦ INDUSTRIAL SEATING
- ⑧ CATENARY LIGHTING
- ⑨ TRAIL HUB
- ⑩ AMPHITHEATER
- ⑪ RESTROOM
- ⑫ AMPHITHEATER PLAZA
- ⑬ ROCK CLIMBING HUB
- ⑭ SEATING

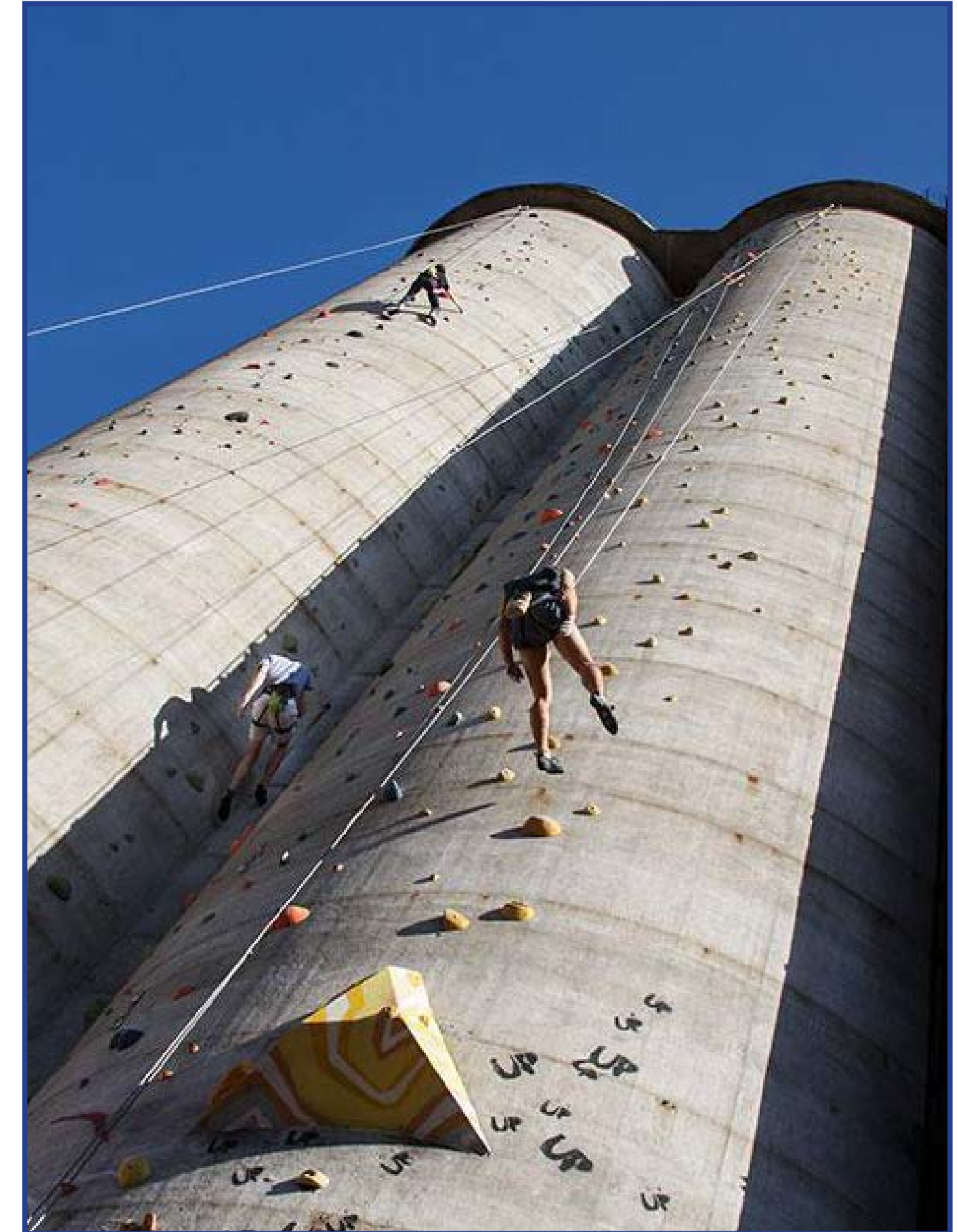
SILO COMMONS PERSPECTIVE VIEWS

GRAIN DISTRICT



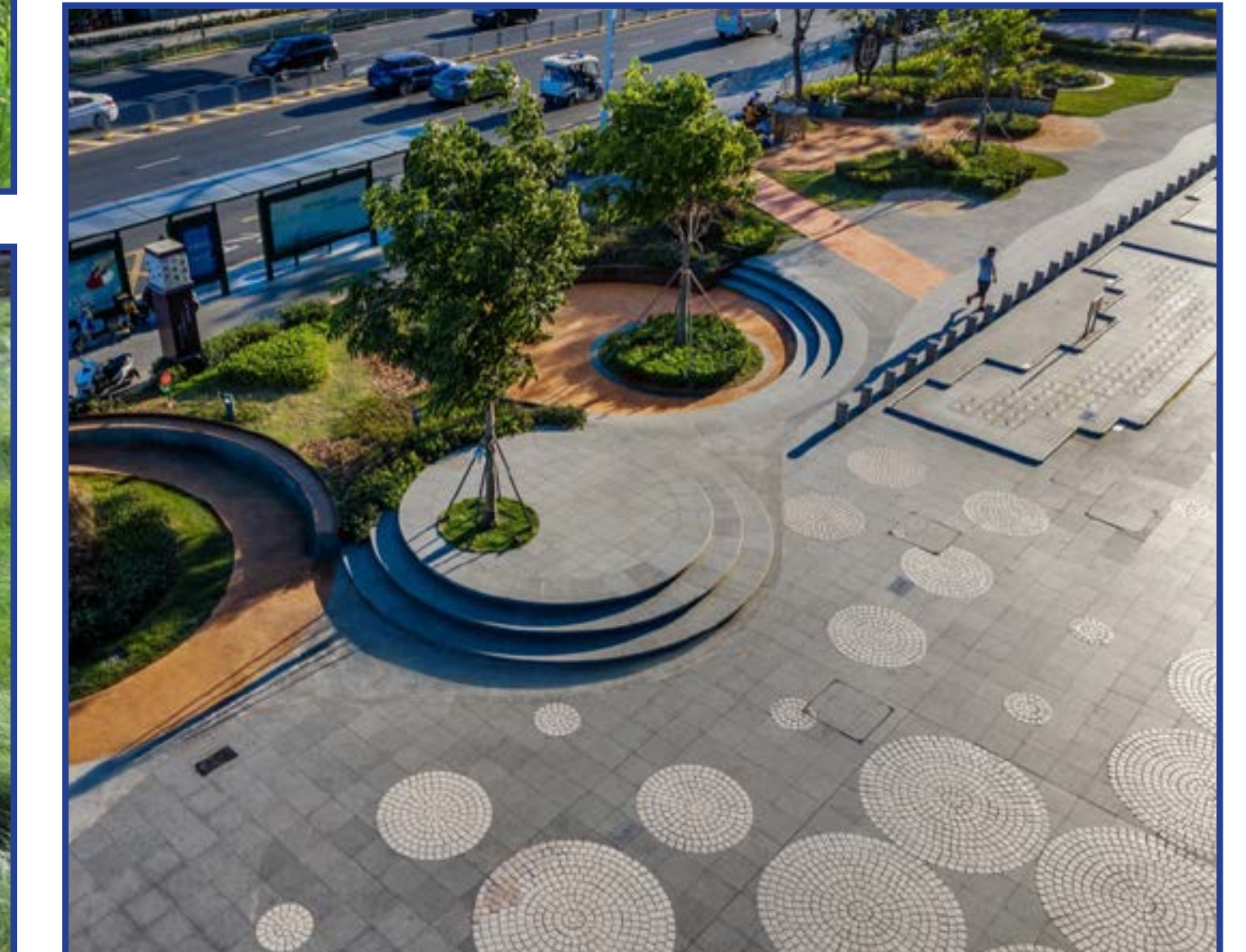
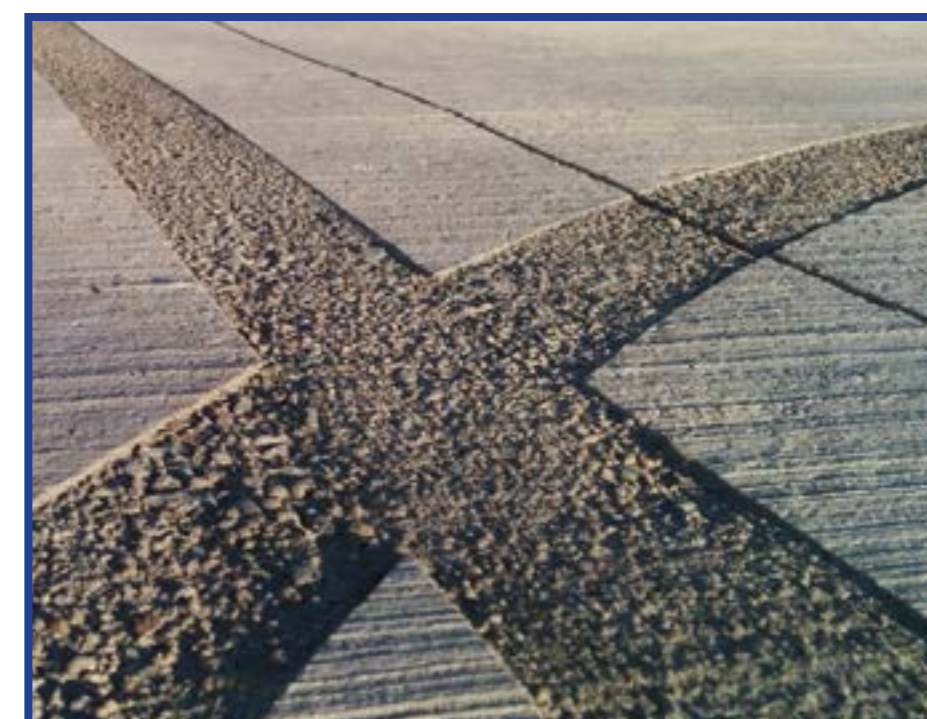
SILO COMMONS PRECEDENT IMAGERY

GRAIN DISTRICT



SILO COMMONS PRECEDENT IMAGERY

GRAIN DISTRICT





**BUSINESS OF THE PARKS & RECREATION BOARD
BONDURANT, IOWA
AGENDA STATEMENT**

Item No. 8.c.
For Meeting of 6/19/2025
Discussion Item

TITLE: - The Garden Installation at Lake Petocka (Artocka Loop)

CONTACT PERSON:

Katie Klus, Communication & Events Coordinator
Marketa Oliver, ICMA-CM, SPHR, City Administrator

BRIEF HISTORY & ANALYSIS: Attached are the plans for "The Garden" at Lake Petocka.

The City Council recently approved a resolution to order construction and sets the date of letting and public hearing for The Garden project.

In 2024, the Bondurant City Council engaged the services of Shive-Hattery, in coordination with the artist group i/thee, to lead schematic design and engineering for The Garden, a functional public art installation at the ARTocka Trail Loop. i/thee's concept envisions a meandering boardwalk that extends out over Lake Petocka. The design and development of The Garden has been shaped by community engagement and is a direct implementation of recommendations included in the City's Art, Culture, & Wayfinding Master Plan.

The current action authorizes solicitation of competitive bids and affirms the final plan set for use in bidding. At this time, the City's consultants have completed approximately 90% of the construction documents. Final refinements are anticipated over the coming days, with a focus on detail clarifications rather than changes in project scope, quantities, or cost. A draft bid set and associated construction documents have been provided for Council review ahead of formal release to bidders, scheduled for June 20, 2025.

The following timeline has been developed to ensure that substantial completion is achieved by fall, with final closeout before the end of the year.

The Garden Project – Proposed Timeline:

- June 16, 2025 – City Council: Order construction and set date of letting and public

hearing

- June 20, 2025 – Plan Solicitation Opens; Public Notice of Hearing and Letting Published
- July 16, 2025 – Bid Letting
- July 21, 2025 – City Council: Public Hearing and Award Project to Contractor
- July 28, 2025 – Preconstruction Meeting and Notice to Proceed
- October 24, 2025 – Substantial Completion
- November 21, 2025 – Final Completion and Project Closeout

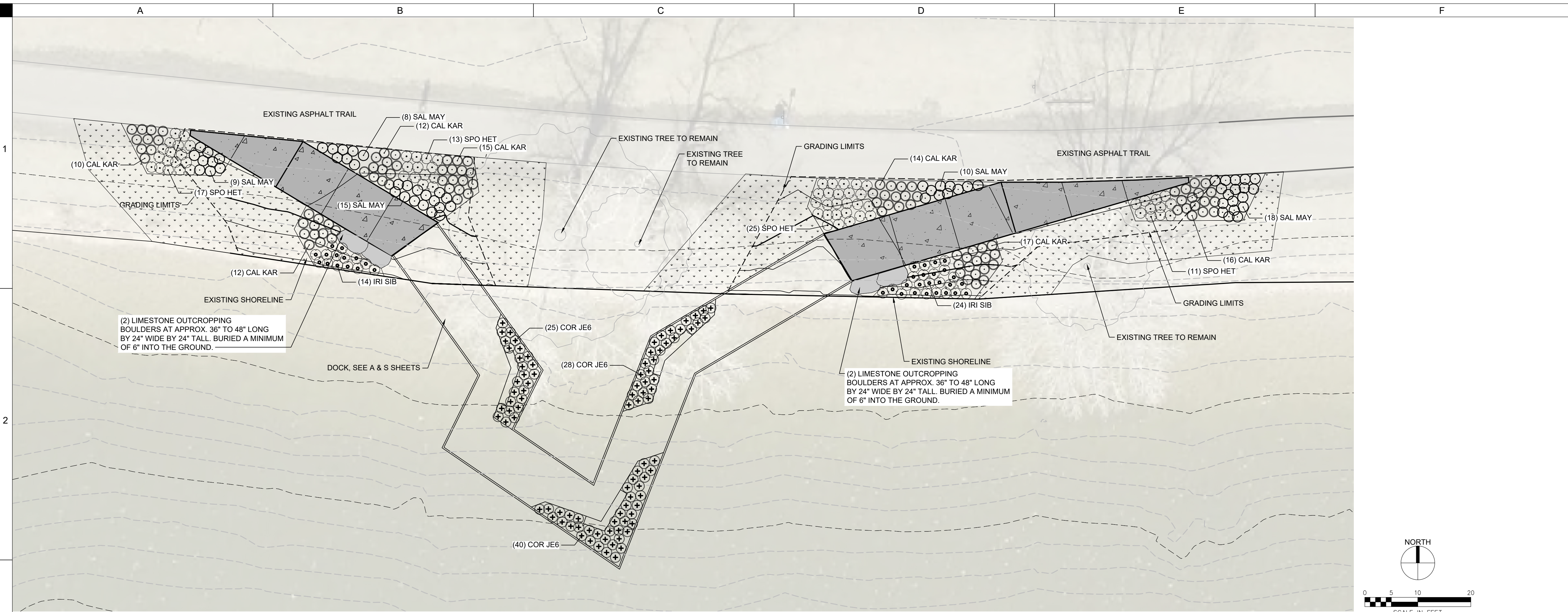
FUNDING SOURCE: Bonds supported by TIF, LOSST; and Grant funds

STAFF RECOMMENDATION: This is a discussion item.

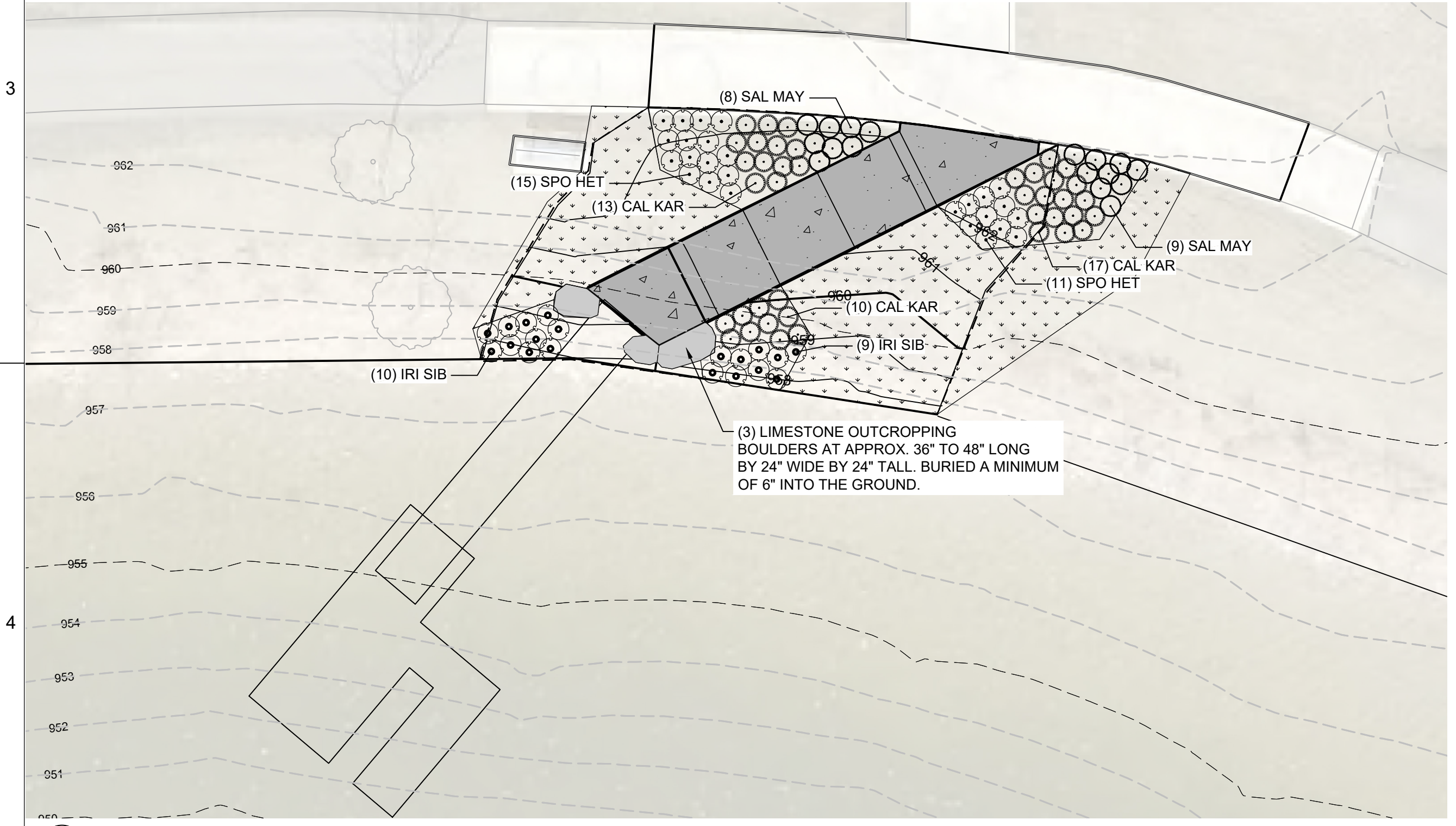
APPROVED FOR SUBMITTAL:

ATTACHMENTS:

1. 2025-06-11_Draft CD_Artocka_Plans



1 MAIN DOCK PLANTING PLAN (SHORELINE & PLANTERS)
1" = 10'

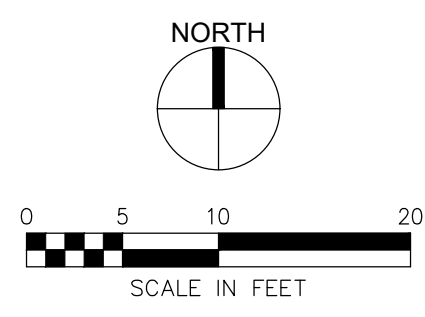


2 KAYAK DOCK PLANTING PLAN (SHORELINE)
1" = 10'

PLANT SCHEDULE

SYMBOL	CODE	QTY	BOTANICAL NAME	COMMON NAME	ROOT	SIZE
BULBS						
⊙	IRI SIB	57	Iris sibirica	Siberian Iris	Bulb	
ORNAMENTAL GRASS						
⊙	CAL KAR	136	Calamagrostis x acutiflora 'Karl Foerster'	Karl Foerster Feather Reed Grass	CONT.	1 gal
⊙	SPO HET	92	Sporobolus heterolepis	Prairie Dropseed	CONT.	1 gal
PERENNIALS						
⊕	COR JE6	93	Coreopsis 'Jethro Tull'	Jethro Tull Tickseed	CONT.	1 gal
⊕	SAL MAY	77	Salvia nemorosa 'Caradonna'	Caradonna Salvia	CONT.	1 gal
SYMBOL	CODE	QTY	BOTANICAL NAME	COMMON NAME	SIZE	
GROUND COVERS						
⊙	SEE	2,499 sf	Seed	Seed	SEED	

- NOTES:**
- ALL PLANTS SHALL BE PER THE RECOMMENDATIONS AND REQUIREMENTS OF THE CURRENT AND 'AMERICAN STANDARDS FOR NURSERY STOCK'.
 - PROTECT ALL STRUCTURES AND UTILITY SERVICES DURING INSTALLATION OF ALL PLANT MATERIAL. IF CONFLICTS EXIST BETWEEN PROPOSED PLANTING LOCATIONS AND OTHER STRUCTURES AND UTILITIES, CONTRACTOR SHALL COORDINATE PLANTING ADJUSTMENTS WITH LANDSCAPE ARCHITECT PRIOR TO INSTALLATION.
 - CONTRACTOR IS RESPONSIBLE FOR ALL DAMAGE DUE TO OPERATIONS INSIDE AND OUTSIDE OF THE CONTRACT LIMIT LINE. ANY AREAS OUTSIDE THE LIMIT OF WORK THAT ARE DISTURBED SHALL BE RESTORED TO ITS ORIGINAL CONDITION AT NO ADDITIONAL COST TO THE OWNER.
 - ALL TREES, SHRUBS, AND PERENNIAL PLANTS ARE LISTED IN THE PLANT SCHEDULES. IF DISCREPANCIES EXIST BETWEEN QUANTITIES SHOWN ON THE DRAWINGS AND QUANTITIES LISTED IN THE PLANT SCHEDULE, THE PLAN QUANTITIES SHALL PREVAIL.
 - PROVIDE A SPADE-CUT EDGE AT THE PERIMETER OF ALL MULCHED PLANTING AREAS THAT ABUT TURF AREAS.
 - SEEDED AREAS SHALL RECEIVE 6" DEPTH TOPSOIL, USING STOCKPILED TOPSOIL FIRST.
 - APPLY PRE-EMERGENT WEED PREVENTER TO ALL PLANTING AREAS PRIOR TO MULCHING. TOP-DRESS PLANTING AREAS WITH DOUBLE-SHREDDED HARDWOOD MULCH TO A DEPTH OF 3". UNLESS OTHERWISE NOTED, ALL DISTURBED AREAS SHALL BE RESTORED WITH TURF GRASS SEEDING TO MEET THE REQUIREMENTS OF THE SEEDING SPECIFICATION, UNLESS OTHERWISE APPROVED BY LANDSCAPE ARCHITECT.
 - THE LOCATIONS OF ALL UTILITIES INDICATED ON THE PLANS ARE TAKEN FROM EXISTING RECORDS. THE EXACT LOCATION AND ELEVATION OF ALL UTILITIES MUST BE DETERMINED BY THE CONTRACTOR. IT SHALL BE THE DUTY OF THE CONTRACTOR TO ASCERTAIN WHETHER ANY ADDITIONAL UTILITIES OTHER THAN THOSE SHOWN ON THE PLAN MAY BE PRESENT.
 - PERENNIAL BED EXTENTS SHALL BE STAKED ON THE PROJECT SITE BY THE CONTRACTOR AND APPROVED BY THE OWNER'S REPRESENTATIVE BEFORE EXCAVATION. PERENNIAL BED EXTENTS MAY BE ADJUSTED BY THE OWNER'S REPRESENTATIVE TO MEET FIELD CONDITIONS.
 - INSTALL ALL ITEMS PER SPECIFICATIONS UNLESS OTHERWISE NOTED.



\\shive-hattery.com\shared\proj\2025\2240018800\LakeArtocka\main\081125\2240018800_L101_LANDSCAPE PLAN.dwg
 Plotted: 8/11/2025 2:01:18 PM

DESIGN INFORMATION

- 1. CODES:
A. INTERNATIONAL BUILDING CODE (IBC) 2021
B. AMERICAN CONCRETE INSTITUTE - BUILDING CODE REQUIREMENTS FOR STRUCTURAL CONCRETE (ACI 318)
C. AMERICAN INSTITUTE OF STEEL CONSTRUCTION - SPECIFICATION FOR STRUCTURAL STEEL BUILDINGS (AISC 360)
D. ALLOWABLE STRENGTH DESIGN (ASD)
E. AMERICAN SOCIETY OF CIVIL ENGINEERS AND STRUCTURAL ENGINEERING INSTITUTE (ASCE/SEI 7) - MINIMUM DESIGN LOADS FOR BUILDINGS AND OTHER STRUCTURES
F. AMERICAN WELDING SOCIETY D1.1
G. AMERICAN FOREST & PAPER ASSOCIATION (AF&PA) NATIONAL DESIGN SPECIFICATION FOR WOOD CONSTRUCTION (NDS)
2. DESIGN LOADS PER THE 2021 IBC (RISK CATEGORY II)
A. DEAD LOADS
STRUCTURE SELF WEIGHT AS SHOWN SOIL 120 PCF
B. LIVE LOADS
PEDESTRIAN 100 PSF
C. ROOF SNOW LOAD
GROUND SNOW LOAD, Pg 30 PSF
FLAT ROOF SNOW LOAD, Pf (0.8*Pg) 24 PSF
MINIMUM ROOF SNOW LOAD, Pm 20 PSF
SNOW EXPOSURE FACTOR, Ce 0.9
SNOW IMPORTANCE FACTOR, Is 1.0
THERMAL FACTOR, Ct 1.2
D. WIND PRESSURE (ASCE 7-16)
WIND SPEED, Vult (LOCAL EMEND.) 115 MPH
NOMINAL DESIGN WIND SPEED, Vassd 90 MPH
WIND EXPOSURE C
INTERNAL PRESSURE COEFFICIENT +/-0.18
MWFRS DESIGN WIND LATERAL PRESSURE 25 PSF
E. SEISMIC DESIGN DATA
SEISMIC IMPORTANCE FACTOR 1.0
MAPPED SPECTRAL RESPONSE ACCELERATIONS, Ss 0.061
MAPPED SPECTRAL RESPONSE ACCELERATIONS, S1 0.052
SITE CLASS D
SPECTRAL RESPONSE COEFFICIENTS, Sds 0.065
SPECTRAL RESPONSE COEFFICIENTS, Sd1 0.083
SEISMIC DESIGN CATEGORY B
BASIC SEISMIC FORCE-RESISTING SYSTEM: "NOT SPECIFICALLY DESIGNED"
DESIGN BASE SHEAR, V = Cs x W 0.022 x W KIPS
SEISMIC RESPONSE COEFFICIENT, Cs 0.022
RESPONSE MODIFICATION FACTOR, R 3.0
ANALYSIS PROCEDURE: - EQUIVALENT LATERAL FORCE
F. DEFLECTION CRITERIA
a. FLOOR LIVE LOAD L/360
3. SOILS INFORMATION BASED ON GEOTECHNICAL REPORT PREPARED BY ALLENDER BUTZKE ENGINEERS, INC., REPORT NO. PN251233, DATED JUNE 6, 2025.
4. MINIMUM FROST PROTECTION DEPTH MEASURED FROM GRADE (-3'-6")

GENERAL NOTES

- 1. THE GENERAL STRUCTURAL NOTES ARE INTENDED TO SUPPLEMENT THE DRAWINGS AND SPECIFICATIONS. SHOULD CONFLICTS EXIST BETWEEN THESE DRAWINGS AND THE SPECIFICATIONS NOTIFY THE ENGINEER OF ANY SUCH CONFLICTS.
2. STRUCTURAL DRAWINGS SHALL BE USED IN CONJUNCTION WITH ALL PROJECT DRAWINGS AND SPECIFICATIONS. REFER TO ALL DRAWINGS FOR THE COORDINATION OF THE WORK IN THIS PROJECT.
3. THE INTENT OF THESE PLANS AND NOTES IS TO PRESENT THE PROJECT REQUIREMENTS. MAJOR DETAILS HAVE BEEN SHOWN ON THE DRAWINGS. HOWEVER, CERTAIN MINOR DETAILS MUST BE WORKED OUT IN THE FIELD OR SHOP DRAWING PROCESS BY THE CONTRACTOR.
4. ELEVATIONS GIVEN ON PLANS ARE IN REFERENCE TO THE FINISHED FLOOR ELEVATION (+100'-0") WHICH IS EQUAL TO THE CIVIL DATUM OF (960.50').
5. UNLESS NOTED OTHERWISE, DETAILS SHOWN ON DRAWINGS ARE TO BE CONSIDERED TYPICAL FOR ALL SIMILAR CONDITIONS.
6. THE STRUCTURE IS DESIGNED TO BE STABLE AND SELF-SUPPORTING AFTER THE IT IS FULLY ERRECTED AND ALL CONNECTIONS ARE COMPLETED. UNLESS NOTED OTHERWISE, THE DRAWINGS DO NOT INDICATE THE MEANS AND METHODS OF CONSTRUCTION. IT IS SOLELY THE CONTRACTOR'S RESPONSIBILITY TO DETERMINE THE ERECTION PROCEDURE AND SEQUENCING TO ENSURE THE SAFETY OF THE BUILDING AND ITS COMPONENT PARTS DURING ERECTION. THIS INCLUDES THE ADDITION TEMPORARY BRACING, GUYS AND TIE-DOWNS NECESSARY FOR THE ERECTION PROCESS.
7. IT IS SOLELY THE CONTRACTOR'S RESPONSIBILITY TO FOLLOW THE APPLICABLE SAFETY CODES AND REGULATIONS DURING ALL PHASES OF CONSTRUCTION.
8. CONTRACTOR'S CONSTRUCTION AND ERECTION SEQUENCE SHALL CONSIDER THE EFFECTS OF THERMAL MOVEMENTS OF THE STRUCTURAL ELEMENTS DURING THE CONSTRUCTION PERIOD.
9. EXISTING CONDITIONS:
A. DURING CONSTRUCTION THE CONTRACTOR MAY ENCOUNTER EXISTING CONDITIONS WHICH ARE NOT KNOWN OR ARE AT VARIANCE WITH PROJECT DOCUMENTATION (DISCOVERY). SUCH CONDITIONS MAY INTERFERE WITH THE NEW CONSTRUCTION OR REQUIRE PROTECTION AND/OR SUPPORT OF EXISTING WORK DURING CONSTRUCTION. IT MAY ALSO CONSIST OF DAMAGED OR DETERIORATION OF STRUCTURAL MATERIALS OR COMPONENTS WHICH COULD JEOPARDIZE THE STRUCTURAL INTEGRITY OF THE STRUCTURE. THE CONTRACTOR SHALL NOTIFY THE ENGINEER OF ALL DISCOVERIES WHICH MAY INTERFERE WITH THE PROPER EXECUTION OF THE WORK OR JEOPARDIZE THE STRUCTURAL INTEGRITY OF THE STRUCTURE PRIOR TO PROCEEDING WITH THE WORK RELATED TO SUCH DISCOVERIES.
B. CONTRACTOR SHALL INVESTIGATE THE SITE DURING EARTHWORK OPERATIONS FOR FILL MATERIAL OR BURIED STRUCTURES. IMMEDIATELY, NOTIFY THE ENGINEER IF ANY SUCH MATERIALS OR STRUCTURES ARE DISCOVERED.
10. BEFORE SUBMITTING A BID, EACH BIDDER SHALL VISIT THE SITE AND BECOME FULLY ACQUAINTED WITH THE EXISTING CONDITIONS, CONSTRUCTION REQUIREMENTS, RESTRICTIONS, QUANTITIES AND EQUIPMENT NECESSARY TO COMPLETE THE WORK. THE BID SHALL INCLUDE ALL ITEMS REQUIRED TO COMPLETE THE WORK WITHIN THE EXISTING CONDITIONS. DISRUPTION OF THE OWNERS NORMAL ACTIVITIES AROUND THE CONSTRUCTION SITE SHALL BE KEPT TO A MINIMUM.
11. THE COST OF ADDITIONAL DESIGN WORK DUE TO ERRORS AND OMISSIONS BY THE CONTRACTOR DURING CONSTRUCTION SHALL BE BORNE BY THE RESPONSIBLE CONTRACTOR.
12. ANY ENGINEERING DESIGN PROVIDED BY OTHER AND SUBMITTED FOR REVIEW OR RECORD SHALL BEAR THE STAMP AND SIGNATURE OF A PROFESSIONAL STRUCTURAL ENGINEER REGISTERED IN THE STATE WHERE THE PROJECT EXISTS.
13. CONTRACTOR SHALL COORDINATE WORK SCHEDULES WITH THE OWNER TO ESTABLISH CONSTRUCTION SEQUENCING AROUND ANY OCCUPIED AREAS. CONTRACTOR SHALL NOT PROCEED TO OCCUPIED AREAS UNTIL AUTHORIZED BY THE OWNER.
14. CONTRACTOR SHALL REMOVE ALL DEBRIS AND WASTE MATERIALS RESULTING FROM CONSTRUCTION FROM THE SITE, UNLESS NOTED OTHERWISE.
15. CONTRACTOR SHALL MINIMIZE CREATION OF DUST, DIRT AND WINDBORNE DEBRIS FROM BLOWING ACROSS THE SITE AND ONTO ADJACENT SITES.

GENERAL WOOD NOTES

- 1. ALL ROUGH CARPENTRY WORK SHALL CONFORM TO THE REQUIREMENTS OF NFPA "NATIONAL DESIGN SPECIFICATION OF WOOD CONSTRUCTION", TPI "DESIGN SPECIFICATION FOR LIGHT METAL PLATE CONNECTED WOOD TRUSSES", APA "PLYWOOD DESIGN SPECIFICATIONS" DOC PS 1 "PRODUCT STANDARDS FOR CONSTRUCTION AND INDUSTRIAL PLYWOOD" AND CHAPTER 23 OF THE INTERNATIONAL BUILDING CODE.
2. THE CONTRACTOR SHALL TAKE NECESSARY MEASURES TO TEMPORARILY SUPPORT PORTIONS OF THE WORK UNTIL THE ENTIRE STRUCTURE IS COMPLETE.
3. ALL FRAMING LUMBER THROUGHOUT TO BE PRESSURE-TREATED NO. 2 DOUGLAS FIR-LARCH, HEM-FIR, SOUTHERN PINE OR SPRUCE PINE FIR OR BETTER.
4. FLOOR SHEATHING SHALL BE 1 INCH APA RATED 3200. ATTACH SHEATHING TO SUPPORT MEMBERS WITH #10 SCREWS AT 6" OC. LAY SHEATHING WITH STRENGTH AXIS PERPENDICULAR TO SUPPORT MEMBER AND STAGGER JOINTS 4'-0". PROVIDE FULLY BLOCKED PANELS AT LOCATIONS INDICATED ON PLAN.
5. WOOD FRAMING CONNECTORS SUCH AS JOIST HANGERS, STRAPS, WIND CLIPS, ETC. SHALL BE SIMPSON STRONG-TIE OR APPROVED EQUAL.

HELICAL PIERS

- 1. HELICAL PIERS ARE TO BE DESIGNED USING THE VALUES DEFINED IN THE GEOTECHNICAL REPORT PREPARED BY ALLENDER BUTZKE ENGINEERS, INC., REPORT NO. PN251233, DATED JUNE 6, 2025.
A. TOTAL COMPRESSION PIER CAPACITY: XX KIPS
B. TOTAL TENSION UPLIFT CAPACITY: XX KIPS
2. REFER TO GEOTECHNICAL REPORT FOR SOIL BORING LOGS AND ADDITIONAL SUBSURFACE PARAMETERS NECESSARY FOR THE INSTALLATION OF THE PIERS.
3. HELICAL PIERS SHALL BE DESIGNED TO SUPPORT THE SPECIFIED COMPRESSIVE LOADS INDICATED. THE OVERALL LENGTH, HELIX CONFIGURATION AND MINIMUM TORSIONAL RESISTANCE OF HELICAL PIER SHALL BE SUCH THAT REQUIRED CAPACITY IS DEVELOPED BY THE HELIX PLATES IN THE APPROPRIATE BEARING STRATUM.
4. HELICAL PIER SYSTEM SHALL MEET A MAXIMUM SETTLEMENT REQUIREMENT OF 1 INCH OF TOTAL SETTLEMENT UNDER DESIGN LOAD AND MAXIMUM 1/2 INCH IN DIFFERENTIAL SETTLEMENT.
5. HELICAL PIER SECTIONS SHALL HAVE SHAFT SECTIONS OF HOT-ROLLED ROUND SOLID STEEL BARS MEETING THE REQUIREMENTS OF ASTM A29 OR STRUCTURAL STEEL PIPE, SEAMLESS OR STRAIGHT SEAM WELDED MEETING THE REQUIREMENTS OF ASTM A53, A252, A500, A513 OR A618.
6. HELICAL PIER LEAD SECTIONS SHALL BE HOT-ROLLED LOW ALLOY STEEL SHEET, STRIP OR PLATE MEETING THE REQUIREMENTS OF ASTM A572, A586, OR A1018 GRADE 50. MINIMUM PLATE THICKNESS OF 3/8" AND MEETING DESIGN REQUIREMENTS.
7. HELICAL PIER SECTIONS SHALL BE HOT-DIP GALVANIZED PER ASTM A123 OR A153.
8. ALL COUPLING BOLTS SHALL CONFORM TO ASTM A320 GRADE 7 OR ASTM A325 AND BE HOT-DIPPED GALVANIZED.
9. HELICAL PIERS SHALL BE INSTALLED USING TORQUE INDICATOR EQUIPMENT THAT IS CAPABLE OF PROVIDING CONTINUOUS MEASUREMENT OF APPLIED TORQUE THROUGHOUT THE INSTALLATION. TORQUE INDICATOR SHALL BE CALIBRATED PRIOR TO START OF WORK.
10. HELICAL PIERS SHALL BE CENTERED AT THE PROPER LOCATION INDICATED IN THE DRAWINGS TO MEET THE FOLLOWING TOLERANCES.
A. MAXIMUM LATERAL DEVIATION FROM THE CORRECT LOCATION AT CUT-OFF ELEVATION SHALL BE 1.5"
B. MAXIMUM DEVIATION FROM DESIGN CUT OFF ELEVATION SHALL BE 1"
C. VERTICAL DEVIATION NO GREATER THAN 3%
11. IF OBSTRUCTIONS ARE ENCOUNTERED AT A DEPTH THAT CANNOT BE REMOVED OR DRILLED THROUGH, CONTRACTOR SHALL NOTIFY THE ENGINEER.

CAST-IN-PLACE CONCRETE

- 1. ALL CONCRETE SHALL CONFORM TO THE LATEST REQUIREMENTS OF THE AMERICAN CONCRETE INSTITUTES PUBLICATIONS: ACI 301, ACI 305.1, ACI 306.1, ACI 315, AND ACI 318 UNLESS NOTED OTHERWISE.
2. CONCRETE COMPRESSIVE STRENGTH (28 DAY) Fc = 4000 PSI
3. CONCRETE REINFORCEMENT STANDARDS:
DEFORMED BARS ASTM A615 Fy = 60 KSI
4. ALL CONCRETE SHALL BE STONE AGGREGATE UNLESS NOTED OTHERWISE. SUBMIT MIX DESIGN AND DOCUMENTATION FOR APPROVAL PER ACI 318.
5. REINFORCEMENT PROTECTION
A. CONCRETE PLACED AGAINST EARTH - 3"
B. CONCRETE PLACED IN FORMS BUT EXPOSED TO WEATHER OR EARTH:
a. BARS #5 AND SMALLER - 1 1/2"
b. BARS LARGER THAN #5 - 2"
C. CONCRETE NOT EXPOSED TO WEATHER OR IN CONTACT WITH GROUND:
a. SLABS, WALLS, AND JOISTS - 3/4"
b. BEAMS, COLUMNS - 1 1/2"
6. WHERE REQUIRED, DOWELS SHALL MATCH THE SIZE, NUMBER AND SPACING OF THE MAIN REINFORCING UNLESS NOTED OTHERWISE.
7. ALL SPLICES, STANDARD HOOKS, AND DEVELOPMENT LENGTHS TO BE PER THE REFERENCED EDITION OF ACI 318. MAKE BARS CONTINUOUS AROUND CORNERS. ALL SPLICES SHALL BE BY CONTACT LAP.
8. ALL SPLICES SHALL BE A CLASS "B" TENSION SPLICE AS DEFINED IN ACI 318. PROVIDE LAP SPLICES LENGTHS AS FOLLOWS:

Table with 3 columns: BAR SIZE, 4000 PSI TYPICAL, TOP BARS. Rows include #3, #4, #5, #6, #7, #8, #9, #10, #11 with corresponding dimensions.

- LAP SPLICE LENGTHS GIVEN, ASSUME CLEAR SPACING BETWEEN BARS OF 2 BAR DIAMETERS, AND A MINIMUM CLEAR COVER OF 1 BAR DIAMETER. TOP BARS ARE DEFINED AS HORIZONTAL BARS WITH MORE THAN 12" ON FRESH CONCRETE BENEATH THE BARS.
9. WALLS AND GRADE BEAMS SHALL NOT HAVE JOINTS IN A HORIZONTAL PLANE, UNLESS APPROVED BY THE ENGINEER.
10. CONSTRUCTION JOINTS IN STRUCTURAL CONCRETE WORK MUST BE MADE AT CENTER OF SPAN OR AT CENTER OF SUPPORT WITH VERTICAL BULKHEADS AND HORIZONTAL KEYS, UNLESS OTHERWISE SHOWN.
11. THERE SHALL BE NO ADDITIONAL OPENINGS LARGER THAN 10" IN CONCRETE WALLS AND SLABS NOT SHOWN. REFER TO CONCRETE OPENING DETAIL FOR ADDITIONAL REINFORCEMENT AROUND OPENINGS.
12. REINFORCING STEEL SHALL BE SECURELY FASTENED INTO FORMS PRIOR TO POURING CONCRETE. WET SETTING OF REINFORCING STEEL WILL NOT BE ACCEPTED PER ACI.
13. CONCRETE MIX - FOUNDTATIONS

Table with 2 columns: COARSE AGGREGATE, FINE AGGREGATE, WATER/CEMENT RATIO, SLUMP (NO WATER REDUCER), SLUMP (WITH WATER REDUCER), AIR CONTENT. Values include 100% PASSING 1" SIEVE, 100% PASSING 3/8" SIEVE, 0.45, 4" +/- 1", 4" TO 8", 6% +/- 1.5%.

STRUCTURAL STEEL

- 1. STRUCTURAL STEEL SHALL CONFORM TO THE REFERENCED EDITION OF THE AISC "SPECIFICATION FOR STRUCTURAL STEEL BUILDINGS".
2. STRUCTURAL STEEL MATERIAL STANDARDS
ANGLE AND RECTANGULAR HSS ASTM A36 Fy = 36 KSI
SQUARE AND RECTANGULAR HSS ASTM A500, GR C Fy = 50 KSI
3. STRUCTURAL STEEL CONNECTION STANDARDS:
HIGH STRENGTH BOLTS ASTM F3125 GRADE A325
TENSION CONTROL BOLT/NUT/WASHER ASTM F1852
HEAVY HEX NUT ASTM A563
WASHERS ASTM F436
WELDING ELECTRODES (CARBON STEEL) AWS E1, E70XX
4. WELDING SHALL BE IN ACCORDANCE WITH STRUCTURAL WELDING CODE, AWS D1.1, LATEST EDITION, AND SHALL BE PERFORMED BY CERTIFIED WELDERS ONLY USING PROPER ELECTRODES FOR MATERIAL BEING WELDED. PROVIDE WELD SIZE IN ACCORDANCE WITH AISC SPECIFICATIONS, BUT NOT LESS THAN 3/16" FILLET, CONTINUOUS UNLESS OTHERWISE NOTED.
5. ALL HIGH STRENGTH BOLTS SHALL BE INSTALLED IN ACCORDANCE WITH RCSC - "SPECIFICATION FOR STRUCTURAL JOINTS USING ASTM A325 OR A490 BOLTS." SEE DRAWINGS FOR BOLTS SIZES. USE 3/4" DIAMETER, A325 BOLTS UNLESS NOTED OTHERWISE.
6. WHEN TENSION CONTROL BOLTS ARE INDICATED "TC" ON THE DRAWINGS, PROVIDE HIGH STRENGTH "TENSION CONTROLLED" BOLTS MEETING ASTM F1852, TYPE 1.
7. ALL BOLTED CONNECTIONS ARE BEARING TYPE, UNLESS INDICATED AS TENSION CONTROLLED (TC) OR SLIP CRITICAL (SC), PROVIDE STANDARD HOLES FOR BEARING TYPE CONNECTION WHICH ARE 1/16" WIDER DIAMETER THAN THE BOLT.
8. ALL EXTERIOR EXPOSURE STEEL FRAMING, STEEL LINTEL ASSEMBLIES, BRICK RELIEF ANGLES AND CONNECTORS SHALL BE HOT DIPPED GALVANIZED. ITEMS INDICATED TO BE GALVANIZED SHALL BE HOT-DIP GALVANIZED IN COMPLIANCE WITH ASTM A123.
9. AFTER FABRICATION, ALL STEEL SHALL BE CLEANED OF ALL RUST, LOOSE MILL SCALE AND OTHER FOREIGN MATERIALS. STEEL SHALL BE HAND TOoled CLEANED (SSPC-SP2) OR POWER TOOL CLEANED (SSPC-SP3).
10. THERE SHALL BE NO FIELD CUTTING OF STRUCTURAL STEEL MEMBERS FOR THE WORK OF OTHER TRADES WITHOUT PRIOR WRITTEN APPROVAL OF THE STRUCTURAL ENGINEER OF RECORD.
11. ALL MISCELLANEOUS STEEL AS SHOWN OR REFERENCED ON THE ARCHITECTURAL DRAWINGS SHALL BE FABRICATED AND INSTALLED AS PART OF THE STRUCTURAL STEEL.
12. CONTRACTOR SHALL PROVIDE ALL TEMPORARY SHORES, GUYS, BRACES AND OTHER SUPPORTS DURING ERECTION TO KEEP STRUCTURAL STEEL SECURE, PLUMB AND IN ALIGNMENT AGAINST TEMPORARY CONSTRUCTION LOADS AND LOADS EQUAL TO DESIGN LOADS. REMOVE ALL TEMPORARY SUPPORTS WHEN PERMANENT STRUCTURAL STEEL FRAMING AND CONNECTIONS ARE COMPLETED.
13. MAINTAIN ERECTION TOLERANCES OF STRUCTURAL STEEL WITHIN AISC 303, "CODE OF STANDARD PRACTICE FOR STEEL BUILDINGS AND BRGES."
14. DO NOT ENLARGE MISALIGNED BOLT HOLES BY BURNING OR THERMAL CUTTING. REAM HOLES THAT MUST BE ENLARGED TO INSTALL BOLTS.

STEEL DECK

- 1. ALL METAL DECK SHALL BE DESIGNED, MANUFACTURED, AND INSTALLED IN ACCORDANCE WITH THE LATEST PROVISIONS OF THE STEEL DECK INSTITUTE - "DESIGN MANUAL FOR COMPOSITE DECKS, FORM DECKS, ROOF DECKS AND CELLULAR METAL FLOOR DECK WITH ELECTRICAL DISTRIBUTION" AND UNDERWRITER REQUIREMENTS (I.E. FACTORY MUTUAL).
2. STEEL DECK AND ACCESSORIES SHALL BE FABRICATED FROM STEEL SHEETS CONFORMING TO THE FOLLOWING:
GALVANIZED STEEL DECK ASTM A853, GR 50
3. PROVIDE METAL DECK MANUFACTURED BY A MEMBER OF THE STEEL DECK INSTITUTE OF THE TYPE AND GAUGE INDICATED ON THE DRAWINGS.
4. GALVANIZED STEEL ROOF, FLOOR AND COMPOSITE DECK SHALL BE SHEET MATERIAL CONFORMING TO ASTM A924 WITH A MINIMUM G60 COATING.
5. MINIMUM DECK BEARING ON STEEL MEMBERS SHALL BE 1 1/2". INSTALL DECK WITH A MINIMUM 2" END LAPS CENTERED OVER SUPPORT MEMBERS. COMPOSITE FLOOR DECK ENDS SHALL NOT BE LAPED.
6. DECK MANUFACTURER SHALL PROVIDE ALL RIDGE AND VALLEY PLATES, FLOOR DECK FILLERS, AND COLUMN CLOSURES NECESSARY TO COMPLETE THE DECK INSTALLATION. ALL DECKS AND ACCESSORIES SHALL BE GALVANIZED, 20 GA. MINIMUM.
7. WHERE NOT INDICATED IN THE DRAWINGS, ATTACH DECK TO SUPPORTING STEEL MEMBERS WITH EITHER PUDDLE WELDS OR POWDER ACTUATED FASTENERS:
A. (4) 5/8" DIAMETER PUDDLE WELDS PER 36 INCH WIDE SHEET (36/4 PATTERN). FASTEN SIDELAPS CONDITIONS WITH #10 SELF DRILLING SCREWS. MINIMUM OF ONE SCREW AT EACH MID SPAN OR AT 24" ON CENTER MAXIMUM. ATTACH DECK TO EDGES AT MEMBERS PARALLEL TO CORRUGATIONS WITH 5/8" DIAMETER PUDDLE WELDS AT MINIMUM 6" ON CENTER.
B. APPROVED EQUIVALENT POWDER ACTUATED FASTENERS THAT MEET THE SAME CAPACITY VALUES AS WELDED CONNECTIONS.
8. DO NOT HANG ANY PIPING, DUCT WORK OR EQUIPMENT GREATER THAN 50LBS FROM STEEL ROOF DECK.
9. AFTER DECK INSTALLATION, PREPARE AND REPAIR DAMAGED GALVANIZED COATINGS ON BOTH SURFACES OF THE DECK WITH GALVANIZED REPAIR PAINT ACCORDING TO ASTM A780 AND MANUFACTURER'S WRITTEN INSTRUCTIONS.
10. VERIFY ALL OPENING SIZES AND LOCATIONS WITH THE APPROPRIATE TRADES. REINFORCE DECK OPENINGS FROM SIX (6) INCHES TO TWELVE (12) INCHES IN SIZE WITH L2x2x1/4 STEEL ANGLES. PLACE FRAMING ANGLES PERPENDICULAR TO FLUTES. EXTEND A MINIMUM TWO (2) FLUTES BEYOND EACH SIDE OF OPENING AND WELD TO DECK AT EACH FLUTE. REFER TO TYPICAL DETAIL FOR LARGER OPENINGS.

SUBMITTALS

- 1. CONTRACTOR SHALL SUBMIT FOR REVIEW AND APPROVAL THE FOLLOWING SUBMITTALS FOR EACH MATERIAL INDICATED BELOW.
2. CONCRETE REINFORCING
A. SUBMIT CONCRETE REINFORCEMENT SHOP DRAWINGS IN ACCORDANCE WITH ACI 315 FOR APPROVAL.
a. DETAIL BARS IN ACCORDANCE WITH "ACI DETAILING MANUAL", PUBLICATION SP-66 AND THE LATEST EDITION OF ACI 318 "BUILDING CODE REQUIREMENTS FOR REINFORCED CONCRETE".
3. CAST-IN-PLACE CONCRETE
A. SUBMIT CONCRETE MIX DESIGNS FOR EACH APPLICATION LOCATION INDICATED IN THE DRAWINGS.
B. SUBMIT SHOP DRAWING OF EMBEDDED STEEL ELEMENTS AND CONNECTIONS.
4. STRUCTURAL STEEL
A. STRUCTURAL STEEL SHOP DRAWINGS SHOWING COMPLETE DIMENSIONS, DETAILS, SIZES, AND GRADES OF STEEL MEMBERS AND CONNECTIONS. SIZE, TYPE, AND NUMBER OF WELDS SHALL BE PREPARED AND SUBMITTED FOR APPROVAL PRIOR TO FABRICATION OF STEEL COMPONENTS.
B. STRUCTURAL STEEL SHOP DRAWINGS SHALL BE DETAILED IN COMPLIANCE WITH THE AISC "DETAILING FOR STEEL CONSTRUCTION". STRUCTURAL STEEL SHALL BE FABRICATED AND ERRECTED IN COMPLIANCE WITH AISC 360 - "SPECIFICATION FOR STRUCTURAL STEEL BUILDINGS".
5. STEEL DECKING
A. SUBMIT STEEL DECK SHOP DRAWING INDICATING PLANS, SIZES, LENGTHS, SPACINGS, BEARING CONDITIONS AND CONNECTION REQUIREMENTS.
6. WOOD FRAMING
A. PROVIDE WOOD SHOP DRAWINGS WHICH INCLUDE THE FOLLOWING:
a. WOOD SHOP DRAWINGS SHOWING COMPLETE DIMENSIONS, DETAILS, MEMBER SIZES, SPECIES AND GRADES OF WOOD.
b. DETAIL CONNECTIONS AT MEMBER ENDS AND ADJACENT CONSTRUCTION, INCLUDING CONNECTION HARDWARE.
c. LOCATIONS AND DETAILS OF ANCHORAGE DEVICES TO BE EMBEDDED IN OR ATTACHED TO STRUCTURE OR OTHER CONSTRUCTION.
d. PROVIDE ENGINEERING DESIGN ANALYSIS AND CALCULATIONS DATA SIGNED AND SEALED BY THE QUALIFIED PROFESSIONAL ENGINEER LICENSED IN THE STATE WHERE THE PROJECT IS LOCATED.

SHIVEHATTERY ARCHITECTURE+ENGINEERING

4125 Westown Parkway, Suite 100 515.223.8104 West Des Moines, IA 50266 | SHIVEHATTERY.COM

CITY OF BONDURANT LAKE PETOCKA - ARTOCKA DOCK

CITY OF BONDURANT LAKE PETOCKA, JR HAINES PARKWAY, BONDURANT, IOWA 50055

PRELIMINARY - NOT FOR CONSTRUCTION

Table with 2 columns: DRAWN BY, APPROVED BY, ISSUED FOR, ISSUE DATE, PROJECT NUMBER, FIELD BOOK. Values include CMP, ACB, PRELIMINARY, 06/11/2025, 2240018600.

STRUCTURAL GENERAL INFORMATION

S000

STATEMENT OF SPECIAL INSPECTIONS

THIS STATEMENT OF SPECIAL INSPECTIONS IS SUBMITTED AS A CONDITION FOR PERMIT ISSUANCE IN ACCORDANCE WITH THE SPECIAL INSPECTION AND STRUCTURAL TESTING REQUIREMENTS OF THE BUILDING CODE. IT INCLUDES A SCHEDULE OF SPECIAL INSPECTION SERVICES APPLICABLE TO THE STRUCTURAL COMPONENTS OF THIS PROJECT. IF APPLICABLE, IT INCLUDES REQUIREMENTS FOR SEISMIC RESISTANCE AND/OR REQUIREMENTS FOR WIND RESISTANCE. THIS STATEMENT OF SPECIAL INSPECTIONS ENCOMPASSES THE FOLLOWING DISCIPLINES:

- STRUCTURAL
- MECHANICAL / ELECTRICAL / PLUMBING
- ARCHITECTURAL
- OTHER

GENERAL: THE OWNER SHALL EMPLOY ONE OR MORE SPECIAL INSPECTORS TO PROVIDE INSPECTIONS DURING CONSTRUCTION ON THE TYPES OF WORK LISTED BELOW IN ACCORDANCE WITH THE [2021 INTERNATIONAL BUILDING CODE (IBC 2021) CHAPTER 17 "STRUCTURAL TESTS AND SPECIAL INSPECTIONS"]. THE SPECIAL INSPECTOR SHALL BE A QUALIFIED PERSON WHO SHALL DEMONSTRATE COMPETENCE, TO THE SATISFACTION OF THE BUILDING OFFICIAL, FOR INSPECTION OF THE PARTICULAR TYPE OF CONSTRUCTION OR OPERATION REQUIRING SPECIAL INSPECTION. THESE INSPECTIONS ARE IN ADDITION TO THE INSPECTIONS SPECIFIED IN THE INDIVIDUAL TECHNICAL SPECIFICATIONS.

APPROVED AGENCY: AN APPROVED AGENCY SHALL PROVIDE ALL INFORMATION AS NECESSARY FOR THE BUILDING OFFICIAL TO DETERMINE THAT THE AGENCY MEETS THE APPLICABLE REQUIREMENTS.

THE SPECIAL INSPECTION COORDINATOR SHALL KEEP RECORDS OF ALL INSPECTIONS AND SHALL FURNISH INSPECTION REPORTS TO THE BUILDING OFFICIAL AND THE REGISTERED DESIGN PROFESSIONAL IN RESPONSIBLE CHARGE. DISCOVERED DISCREPANCIES SHALL BE BROUGHT TO THE IMMEDIATE ATTENTION OF THE CONTRACTOR FOR CORRECTION. IF SUCH DISCREPANCIES ARE NOT CORRECTED, THE DISCREPANCIES SHALL BE BROUGHT TO THE ATTENTION OF THE BUILDING OFFICIAL AND THE REGISTERED DESIGN PROFESSIONAL IN RESPONSIBLE CHARGE. THE SPECIAL INSPECTION PROGRAM DOES NOT RELIEVE THE CONTRACTOR OF HIS OR HER RESPONSIBILITIES.

INTERIM REPORTS SHALL BE SUBMITTED TO THE BUILDING OFFICIAL AND THE REGISTERED DESIGN PROFESSIONAL IN RESPONSIBLE CHARGE. A FINAL REPORT OF SPECIAL INSPECTIONS DOCUMENTING COMPLETION OF ALL REQUIRED SPECIAL INSPECTIONS, TESTING AND CORRECTIONS OF ANY DISCREPANCIES NOTED IN THE INSPECTIONS SHALL BE SUBMITTED PRIOR TO ISSUANCE OF A CERTIFICATE OF USE AND OCCUPANCY. JOB SITE SAFETY AND MEANS AND METHODS OF CONSTRUCTION ARE SOLELY THE RESPONSIBILITY OF THE CONTRACTOR.

QUALIFICATIONS OF INSPECTORS AND TESTING TECHNICIANS

THE QUALIFICATIONS OF ALL PERSONNEL PERFORMING SPECIAL INSPECTION AND TESTING ACTIVITIES ARE SUBJECT TO THE APPROVAL OF THE BUILDING OFFICIAL. THE CREDENTIALS OF ALL INSPECTORS AND TESTING TECHNICIANS SHALL BE PROVIDED IF REQUESTED.

KEY FOR MINIMUM QUALIFICATIONS OF INSPECTION AGENTS:

WHEN THE REGISTERED DESIGN PROFESSIONAL IN RESPONSIBLE CHARGE DEEMS IT APPROPRIATE THAT THE INDIVIDUAL PERFORMING A STIPULATED TEST OR INSPECTION HAVE A SPECIFIC CERTIFICATION OR LICENSE AS INDICATED BELOW, SUCH DESIGNATIONS SHALL APPEAR BELOW THE AGENT ON THE SCHEDULE.

- PE/SE STRUCTURAL ENGINEER - A LICENSED SE OR PE SPECIALIZING IN THE DESIGN OF BUILDING STRUCTURE
- PE/GE GEOTECHNICAL ENGINEER - A LICENSED PE SPECIALIZING IN SOIL MECHANICS AND FOUNDATIONS
- EIT ENGINEER-IN-TRAINING - A GRADUATE ENGINEER WHO HAS PASSED THE FUNDAMENTS OF ENGINEERING EXAMINATION

- AMERICAN CONCRETE INSTITUTE (ACI) CERTIFICATION**
- ACI-CFTT CONCRETE FIELD TESTING TECHNICIAN - GRADE 1
 - ACI-COI CONCRETE CONSTRUCTION INSPECTOR
 - ACI-LTT LABORATORY TESTING TECHNICIAN - GRADE 1 & 2
 - ACI-STT STRENGTH TESTING TECHNICIAN

- AMERICAN WELDING SOCIETY (AWS) CERTIFICATION**
- AWS-CWI CERTIFIED WELDING INSPECTOR
 - AWS/AISC-SSI CERTIFIED STRUCTURAL STEEL INSPECTOR

- AMERICAN SOCIETY OF NON-DESTRUCTIVE TESTING (ASNT) INSPECTION**
- ASNT NON-DESTRUCTIVE TESTING TECHNICIAN - LEVEL II OR III

- INTERNATIONAL CODE COUNCIL (ICC) CERTIFICATION**
- ICC-RCSI REINFORCED CONCRETE SPECIAL INSPECTOR
 - ICC-SWSI STRUCTURAL STEEL AND WELDING SPECIAL INSPECTOR

- NATIONAL INSTITUTE OF CERTIFICATION IN ENGINEERING TECHNOLOGIES (NICET)**
- "NICET-CT CONCRETE TECHNICIAN - LEVELS I, II, III, & IV"
 - "NICET-ST SOILS TECHNICIAN - LEVELS I, II, III & IV"
 - "NICET-GET GEOTECHNICAL ENGINEERING TECHNICIAN - LEVEL I, II, III & IV"

- EXTERIOR DESIGN INSTITUTE (EDI) CERTIFICATION**
- EDI-EIFS EIFS THIRD PARTY INSPECTOR

CONTRACTOR'S RESPONSIBILITY REGARDING INSPECTIONS

- THE CONTRACTOR IS RESPONSIBLE FOR SCHEDULING A PRE-CONSTRUCTION MEETING (SCHEDULED AT LEAST 5 BUSINESS DAYS BEFORE START OF CONSTRUCTION). MEETING SHOULD INCLUDE ALL RESPONSIBLE PARTIES (A/E, S/S, FIELD INSPECTOR). MEETING IS FOR ENTIRE PROJECT, NOT PHASE OF WORK.
- PRE-CONSTRUCTION MEETING IS TO BE CONDUCTED BY THE CONTRACTOR WITH MEETING MINUTES TO BE TAKEN AND DISTRIBUTED TO ALL MEMBERS ATTENDING. MEETING MINUTES TO INCLUDE A SIGN-IN SHEET FOR ALL PARTIES.
- THE CONTRACTOR IS RESPONSIBLE FOR SCHEDULING INSPECTIONS AND TESTS. SUFFICIENT NOTICE AND LEAD TIME MUST BE ALLOWED FOR THE INSPECTION AND TESTING TO BE PERFORMED WITHOUT IMPENDING CONSTRUCTION OPERATIONS.
- THE CONTRACTOR MUST COOPERATE WITH THE INSPECTIONS AND TESTING AGENCIES. SAFE ACCESS MUST BE PROVIDED TO ALL INSPECTION AND TEST TO BE PERFORMED. THIS MAY REQUIRE THE CONTRACTOR TO PROVIDE SCAFFOLDING, LADDERS OR LIFTS.
- WHEN DEFICIENCIES ARE IDENTIFIED, THE CONTRACTOR MUST TAKE CORRECTIVE ACTIONS TO COMPLY WITH THE CONTRACT DOCUMENTS OR REMEDY THE DEFICIENCIES AS DIRECTED BY THE REGISTERED DESIGN PROFESSIONAL.
- THE SPECIAL INSPECTION AND QUALITY ASSURANCE PROGRAM DOES NOT RELIEVE THE CONTRACTOR OF HIS OR HER RESPONSIBILITY TO PERFORM QUALITY CONTROL.
- THE CONTRACTOR IS RESPONSIBLE FOR TESTING SERVICES THAT ARE REQUIRED FOR MATERIAL SUBMITTALS AND THAT NOT PART OF THE SPECIAL INSPECTIONS PROGRAM (E.G. AGGREGATE TESTS, CONCRETE MIX DESIGNS, TESTING OF CONTROLLED FILL, MATERIALS, ETC.).

SOILS	SERVICE	EXTENT	AGENT
1. VERIFY MATERIALS BELOW SHALLOW FOUNDATIONS ARE ADEQUATE TO ACHIEVE THE DESIGN BEARING CAPACITY.	FIELD INSPECTION	PERIODIC	PE/GE/EIT
2. VERIFY EXCAVATIONS ARE EXTENDED TO PROPER DEPTH AND HAVE REACHED PROPER MATERIAL.	FIELD INSPECTION	PERIODIC	PE/GE/EIT
3. PERFORM SIEVE TESTS (ASTM D422 & D1140) AND MODIFIED PROCTOR TESTS (ASTM D1557) OF EACH SOURCE OF FILL MATERIAL.	FIELD INSPECTION	PERIODIC	PE/GE/EIT
5. PRIOR TO PLACEMENT OF CONTROLLED FILL, OBSERVE SUBGRADE AND VERIFY THAT SITE HAS BEEN PREPARED PROPERLY	FIELD INSPECTION	PERIODIC	PE/GE/EIT

HELICAL PILE FOUNDATIONS	SERVICE	EXTENT	AGENT
1. VERIFY INSTALLATION EQUIPMENT, PILE DIMENSIONS, TIP ELEVATIONS, FINAL DEPTH, FINAL INSTALLATION TORQUE AND OTHER DATA AS REQUIRED.	FIELD INSPECTION	CONTINUOUS	

STEEL CONSTRUCTION	SERVICE	EXTENT	AGENT
1. FABRICATOR CERTIFICATION	AISC CERTIFIED FABRICATOR REQUIRED BY SPECIFICATION	EACH SUBMITTAL	AWS/AISC-ICC-SWSI
2. MATERIAL VERIFICATION. REVIEW CERTIFIED MILL TEST REPORTS AND IDENTIFICATION MARKINGS ON WIDE-FLANGE SHAPES, HIGH STRENGTH BOLTS, NUTS, AND WELDING ELECTRODES	FIELD INSPECTION	PERIODIC	AWS/AISC-ICC-SWSI
3. EMBEDMENTS: VERIFY DIAMETER, GRADE, TYPE, LENGTH, AND EMBEDMENT. SEE CONCRETE CONSTRUCTION FOR ANCHORS	FIELD INSPECTION	PERIODIC	
4. VERIFY MEMBER LOCATIONS, BRACES, STIFFENERS, AND APPLICATION OF JOINT DETAILS AT EACH CONNECTION COMPLY WITH CONSTRUCTION DOCUMENTS			
5. STRUCTURAL STEEL WELDING:			
A. INSPECTION TASKS PRIOR TO WELDING (OBSERVE OR PERFORM FOR EACH WELDED JOINT OR MEMBER, THE QA TASKS LISTED IN AISC 360, TABLE N5.4-1)	FIELD INSPECTION	PERIODIC AT ALL WELDED JOINTS	
B. INSPECTION TASKS DURING WELDING (OBSERVE OR PERFORM FOR EACH WELDED JOINT OR MEMBER, THE QA TASKS LISTED IN AISC 360, TABLE N5.4-2)	FIELD INSPECTION	PERIODIC AT ALL WELDED JOINTS	
C. INSPECTION TASKS AFTER WELDING (OBSERVE OR PERFORM FOR EACH WELDED JOINT OR MEMBER, THE QA TASKS LISTED IN AISC 360, TABLE N5.4-3)	FIELD INSPECTION	PERIODIC AT ALL WELDED JOINTS	
D. NON-DESTRUCTIVE TESTING (NDT) OF WELDED JOINTS:			
1) COMPLETE PENETRATION WELDS	FIELD ULTRASONIC TESTING - 100%	PERIODIC	
2) THERMALLY CUT SURFACES OF ACCESS HOLES WHEN MATERIAL $t \geq 2"$	FIELD MAGNETIC PARTICLE OR PENETRANT TESTING	PERIODIC	
3) WELDED JOINTS SUBJECT TO FATIGUE WHEN REQUIRED BY AISC 360, APPENDIX 3, TABLE A-3.2	FIELD RADIOGRAPHIC OR ULTRASONIC TESTING	PERIODIC	
4) FABRICATOR'S NDT REPORTS WHEN FABRICATOR PERFORMS NDT	VERIFY REPORTS	EACH SUBMITTAL	
6. STRUCTURAL STEEL BOLTING:			
A. INSPECTION TASKS PRIOR TO BOLTING (OBSERVE OR PERFORM TASKS FOR EACH BOLTED CONNECTION, IN ACCORDANCE WITH QA TASKS LISTED IN AISC 360, TABLE N5.6-1)		PERIODIC AT ALL BOLTED CONNECTIONS	
B. INSPECTION TASKS DURING BOLTING (OBSERVE THE QA TASKS LISTED IN AISC 360, TABLE N5.6-2)		PERIODIC AT ALL BOLTED CONNECTIONS	
1) PRE-TENSIONED AND SLIP-CRITICAL JOINTS			
A) TURN-OF-NUT WITH MATCHING MARKINGS		CONTINUOUS	
B) DIRECT TENSION INDICATOR		CONTINUOUS	
C) TWIST-OFF TYPE TENSION CONTROL BOLT		CONTINUOUS	
D) TURN-OF-NUT WITHOUT MATCHING MARKINGS		CONTINUOUS	
E) CALIBRATED WRENCH		CONTINUOUS	
2) SNUG-TIGHT JOINTS		PERIODIC	
C. INSPECTION TASKS AFTER BOLTING (PERFORM TASKS FOR EACH BOLTED CONNECTION IN ACCORDANCE WITH QA TASKS LISTED IN AISC 360, TABLE N5.6-3)		PERIODIC AT ALL BOLTED CONNECTIONS	

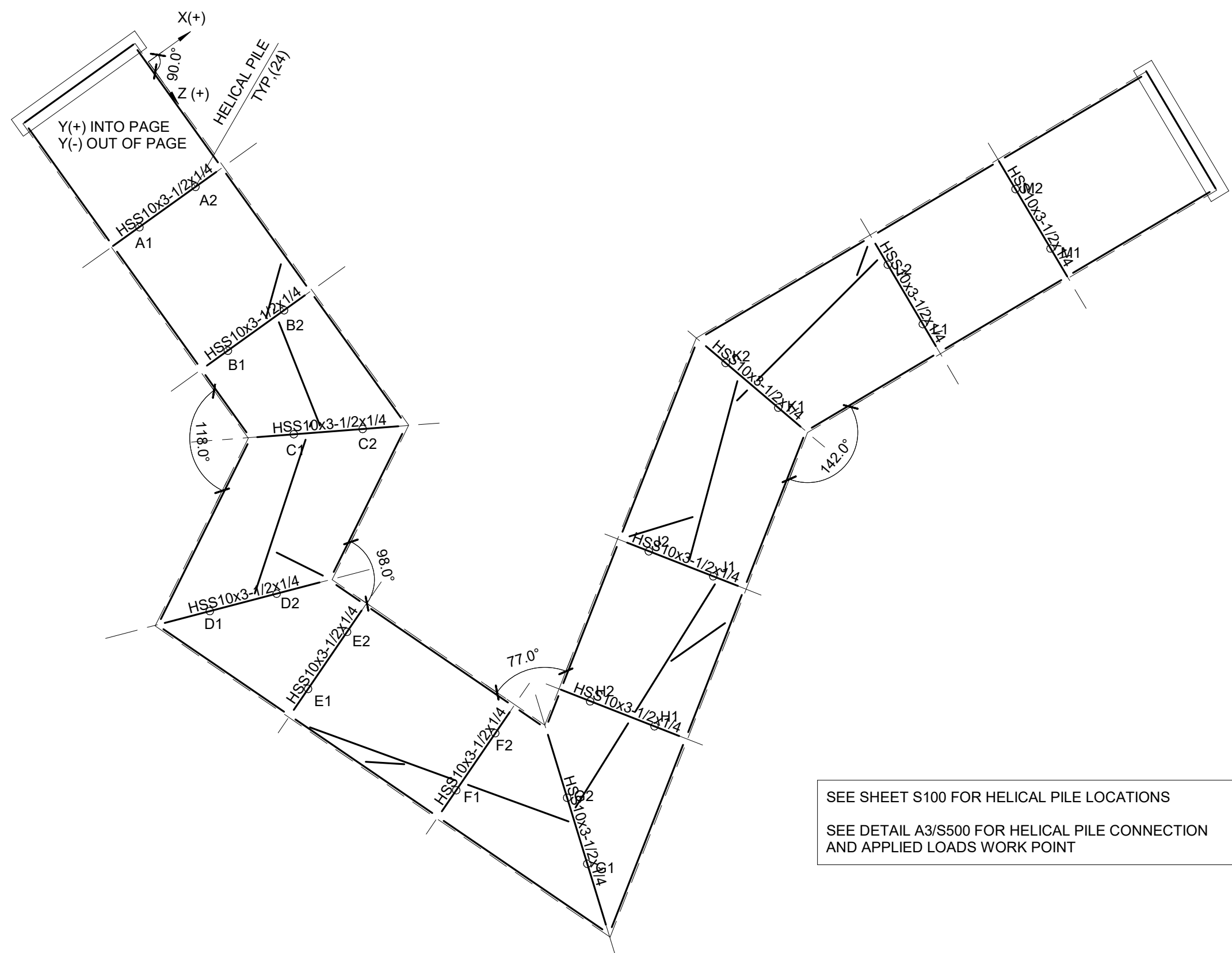
WOOD CONSTRUCTION	SERVICE	EXTENT	AGENT
1. INSPECTION OF THE FABRICATION PROCESS OF WOOD STRUCTURAL ELEMENTS AND ASSEMBLIES	PARTICIPATION IN TRUSS PLATE INSTITUTE QUALITY ASSURANCE PROGRAM REQUIRED PER SPECIFICATION		
2. FOR HIGH-LOAD DIAPHRAGMS, VERIFY NOMINAL SIZE OF FRAMING MEMBERS AT ADJOINING PANEL EDGES, NAIL OR STAPLE DIAMETER AND LENGTH, NUMBER OF FASTENER LINES, AND THAT SPACING BETWEEN FASTENERS IN EACH LINE AND AT EDGE MARGINS AGREE WITH APPROVED BUILDING PLANS	FIELD INSPECTION	PERIODIC	

CONCRETE CONSTRUCTION	SERVICE	EXTENT	AGENT
1. INSPECT SIZE, SPACING, COVER, POSITIONING AND GRADE OF REINFORCING STEEL. VERIFY THAT REINFORCING BARS ARE FREE OF FORM OIL OR OTHER DELETERIOUS MATERIALS. INSPECT BAR LAPS AND MECHANICAL SPLICES. VERIFY THAT BARS ARE ADEQUATELY TIED AND SUPPORTED OF CHAIRS OR BOLSTERS.	FIELD INSPECTION	PERIODIC	ACI-CCI ICC-RCSI
2. REINFORCING STEEL WELDING			
A. VERIFICATION OF WELDABILITY OF STEEL OTHER THAN ASTM A707		PERIODIC	
B. INSPECTION TASKS DURING WELDING (OBSERVE OR PERFORM FOR EACH WELDED JOINT OR MEMBER, THE QA TASKS LISTED IN AISC 360, TABLE N5.4-2)		CONTINUOUS	
3. INSPECT SIZE, POSITIONING AND EMBEDMENT OF ANCHOR RODS. INSPECT CONCRETE PLACEMENT AND CONSOLIDATION AROUND ANCHORS	FIELD INSPECTION	PERIODIC	
4. INSPECTION OF ANCHORS AND REINFORCING STEEL POST-INSTALLED IN HARDENED CONCRETE. PER RESEARCH REPORTS INCLUDING VERIFICATION OF ANCHOR TYPE, ANCHOR DIMENSIONS, HOLE DIMENSIONS, HOLE CLEANING PROCEDURES, ANCHOR SPACING, EDGE DISTANCES, CONCRETE MINIMUM THICKNESS, ANCHOR EMBEDMENT AND TIGHTENING TORQUE	FIELD INSPECTION	PERIODIC OR AS REQUIRED BY THE RESEARCH REPORT ISSUED BY AN APPROVED SOURCE	ACI-CCI ICC-RCSI
5. REVIEW CONCRETE BATCH TICKETS AND VERIFY COMPLIANCE WITH APPROVED MIX DESIGN. VERIFY THAT WATER ADDED AT THE SITE DOES NOT EXCEED THAT ALLOWED BY THE MIX DESIGN	FIELD INSPECTION	PERIODIC	ACI-CCI ICC-RCSI
6. TEST CONCRETE COMPRESSIVE STRENGTH (ASTM C31 & C39), SLUMP (ASTM C143), AIR-CONTENT (ASTM C231 OR C173) AND TEMPERATURE (ASTM C1064).	FIELD INSPECTION	CONTINUOUS	ACI-CFTT ICC-STT
7. INSPECT PLACEMENT OF CONCRETE. VERIFY THAT CONCRETE CONVEYANCE AND DEPOSITING AVOIDS SEGREGATION OR CONTAMINATION. VERIFY THAT CONCRETE IS PROPERLY CONSOLIDATED.	FIELD INSPECTION	CONTINUOUS	ACI-CCI ICC-RCSI
8. INSPECTION FOR MAINTENANCE OF SPECIFIED CURING TEMPERATURE AND TECHNIQUES	FIELD INSPECTION	PERIODIC	ACI-CCI ICC-RCSI
9. INSPECTION OF FORMWORK FOR SHAPE, LINES, LOCATION AND DIMENSIONS	FIELD INSPECTION	PERIODIC	ACI-CCI ICC-RCSI
10. CONCRETE STRENGTH TESTING AND VERIFICATION OF COMPLIANCE WITH CONSTRUCTION DOCUMENTS	FIELD TESTING AND REVIEW OF LABORATORY REPORTS	PERIODIC	
11. PERFORM FLOOR FLATNESS AND/OR LEVELNESS TESTING (ASTM E1155) FOR ALL SLAB-ON-GRADE AND ELEVATED SLABS PER SPECIFICATION.	FIELD INSPECTION	CONTINUOUS	ACI-CCI ICC-RCSI

REACTIONS TABLE NOTES

- PROVIDED LOADS ARE UNFACTORED APPLIED LOADS AT EACH HELICAL PILE AS NOTED ON HELICAL PILE LOADING PLAN AT THE WORK POINT PER DETAIL.
 - A. NO LOAD COMBINATIONS APPLIED TO LOADS IN TABLE.
- LOADS ARE APPLIED IN THE DIRECTION AS INDICATED. Y(+) INDICATE GRAVITY REACTION LOADS, Y(-) INDICATE UPLIFT LOADS.
- ALL LOADS ARE DEVELOPED USING ASCE OUTLINES AND PROCEDURES.

Reaction	Helical Pile Reactions (kips)							
	Dead Load (Y)	Live load (Y)	Snow Load (Y)	Wind Load X (X) (Z)		Wind Load Z (X) (Z)		Wind Load Y (Y)
(Factors)	(1.0)	(1.0)	(1.0)	±1.0	±1.0	±1.0	±1.0	±1.0
A1	0.82	5.46	1.30	-0.53	0.55	-0.02	-0.52	-1.09
A2	1.71	5.48	1.34	-0.60	-0.67	-0.01	-0.29	-1.11
B1	0.23	4.42	1.00	-1.15	1.04	-0.12	-0.82	-0.84
B2	10.40	3.80	1.35	-1.31	-1.33	0.20	-2.21	-1.13
C1	3.91	5.92	1.57	-2.07	-0.10	-0.90	-1.63	-1.31
C2	17.49	1.57	1.21	0.88	0.25	0.57	0.23	-1.00
D1	0.02	5.34	1.20	-0.91	-0.03	0.48	-0.14	-1.00
D2	10.25	4.25	1.47	-3.77	-1.20	0.70	-0.11	-1.22
E1	2.14	6.25	1.55	-0.25	0.29	0.19	-0.16	-1.29
E2	0.51	3.55	0.84	-0.41	-0.10	0.15	-0.09	-0.70
F1	12.73	4.10	1.55	-3.27	-2.49	0.35	-0.69	-1.29
F2	-1.90	4.78	0.97	-0.45	-0.18	0.15	-0.08	-0.81
G1	18.31	2.81	1.51	-3.69	3.17	0.43	-5.07	-1.25
G2	1.30	3.02	0.75	-1.19	2.68	1.34	-4.23	-0.62
H1	16.20	3.31	1.51	-1.90	0.20	-1.40	-0.36	-1.26
H2	-0.87	4.89	1.08	-0.47	0.03	-0.27	-0.42	-0.90
J1	3.52	6.35	1.60	-0.41	0.28	0.57	-0.85	-1.34
J2	10.83	4.11	1.48	-2.58	0.27	-3.13	-0.09	-1.23
K1	0.20	5.91	1.33	-0.87	-1.42	-0.24	-0.95	-1.11
K2	18.41	2.88	1.55	-0.10	-1.39	0.83	-2.23	-1.29
L1	-0.62	5.54	1.28	0.05	-0.01	0.14	-0.55	-1.06
L2	10.04	4.62	1.54	-0.62	0.13	-0.24	-1.64	-1.28
M1	1.09	6.26	1.50	0.03	0.00	0.15	-0.60	-1.25
M2	1.47	6.25	1.50	-0.28	0.01	0.00	-0.71	-1.25



HELICAL PILE LOADING PLAN

1/8" = 1'-0" 0' 12'

SEE SHEET S100 FOR HELICAL PILE LOCATIONS
SEE DETAIL A3/S500 FOR HELICAL PILE CONNECTION AND APPLIED LOADS WORK POINT

**PRELIMINARY
- NOT FOR
CONSTRUCTION**

DRAWN BY	CHP
APPROVED BY	ACB
ISSUED FOR	PRELIMINARY
ISSUE DATE	06/11/2025
PROJECT NUMBER	2240016800
FIELD BOOK	



FRAMING PLAN NOTES

- SEE SHEET S000 FOR GENERAL NOTES AND REQUIRED SPECIAL INSPECTIONS.
- SEE CIVIL AND ARCHITECTURAL PLANS FOR DIMENSIONS AND INFORMATION NOT SHOWN ON THESE PLANS.
- NORTH ARROW SHOWN IS FOR STRUCTURAL REFERENCE ONLY. SEE CIVIL DRAWINGS FOR ACTUAL BUILDING ORIENTATION.
- T/2x8 JOISTS = 99'-11 1/4" UNLESS NOTED OTHERWISE
- T/HSS10x3 1/2x1/4 = 99'-9 3/4" UNLESS NOTED OTHERWISE.
- T/HSS6x3x1/4 = 99'-7 3/4" UNLESS NOTED OTHERWISE.
- T/HSS4x4x1/4 = 99'-4" UNLESS NOTED OTHERWISE.
- HSS BEAMS SHALL BE CONNECTED WITH TYPICAL SHEAR CONNECTION PER DETAIL ON S500.

KEYNOTES

KEY	NOTE
S01	1 1/2" B20 METAL DECK, GALVANIZED
S02	1X6 DECKING PER ARCH. FFE = 100'-0"

**PRELIMINARY
- NOT FOR
CONSTRUCTION**

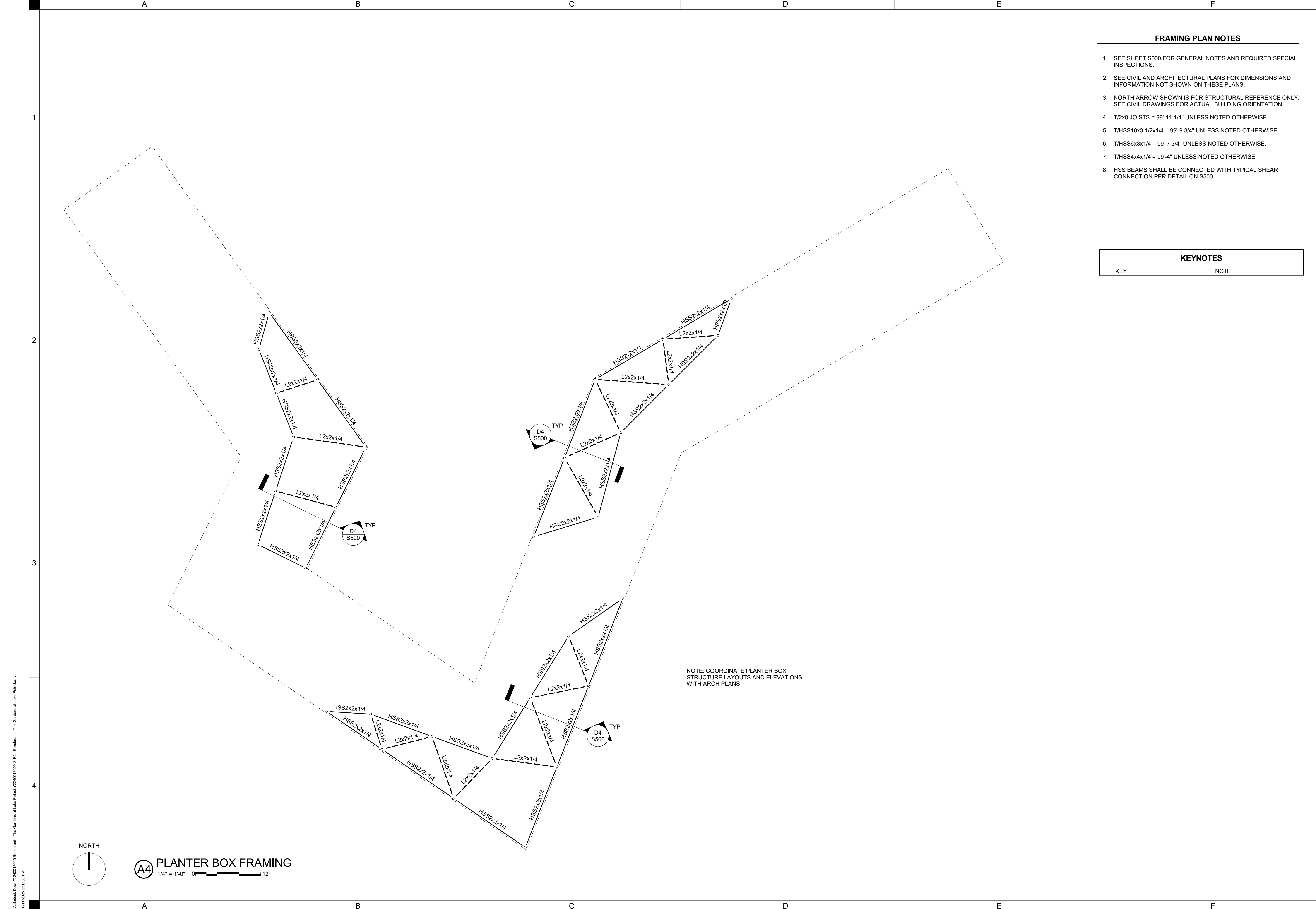
DRAWN BY	CHP
APPROVED BY	ACB
ISSUED FOR	PRELIMINARY
ISSUE DATE	06/11/2025
PROJECT NUMBER	2240018600
FIELD BOOK	

BOARDWALK
FRAMING PLAN

S100

A6 BOARDWALK FRAMING PLAN
1/4" = 1'-0" 0 12'

Autodesk Doc: 2240018600 Bondurant - The Gardens at Lake Petocka - The Gardens at Lake Petocka.rvt
6/11/2025 2:38:58 PM



- FRAMING PLAN NOTES**
- SEE SHEET S000 FOR GENERAL NOTES AND REQUIRED SPECIAL INSPECTIONS.
 - SEE CIVIL AND ARCHITECTURAL PLANS FOR DIMENSIONS AND INFORMATION NOT SHOWN ON THESE PLANS.
 - NORTH ARROW SHOWN IS FOR STRUCTURAL REFERENCE ONLY. SEE CIVIL DRAWINGS FOR ACTUAL BUILDING ORIENTATION.
 - T/2x8 JOISTS = 9'-11 1/4" UNLESS NOTED OTHERWISE.
 - T/HSS10x3 1/2x1/4 = 9'-9 3/4" UNLESS NOTED OTHERWISE.
 - T/HSS6x3x1/4 = 9'-7 3/4" UNLESS NOTED OTHERWISE.
 - T/HSS4x4x1/4 = 9'-4" UNLESS NOTED OTHERWISE.
 - HSS BEAMS SHALL BE CONNECTED WITH TYPICAL SHEAR CONNECTION PER DETAIL ON S500.

KEYNOTES	
KEY	NOTE

NOTE: COORDINATE PLANTER BOX STRUCTURE LAYOUTS AND ELEVATIONS WITH ARCH PLANS

NORTH

A4 PLANTER BOX FRAMING
1/4" = 1'-0" 0 12

**PRELIMINARY
- NOT FOR
CONSTRUCTION**

DRAWN BY	CHP
APPROVED BY	ACB
ISSUED FOR	PRELIMINARY
ISSUE DATE	06/11/2025
PROJECT NUMBER	2240016600
FIELD BOOK	

A

B

C

D

E

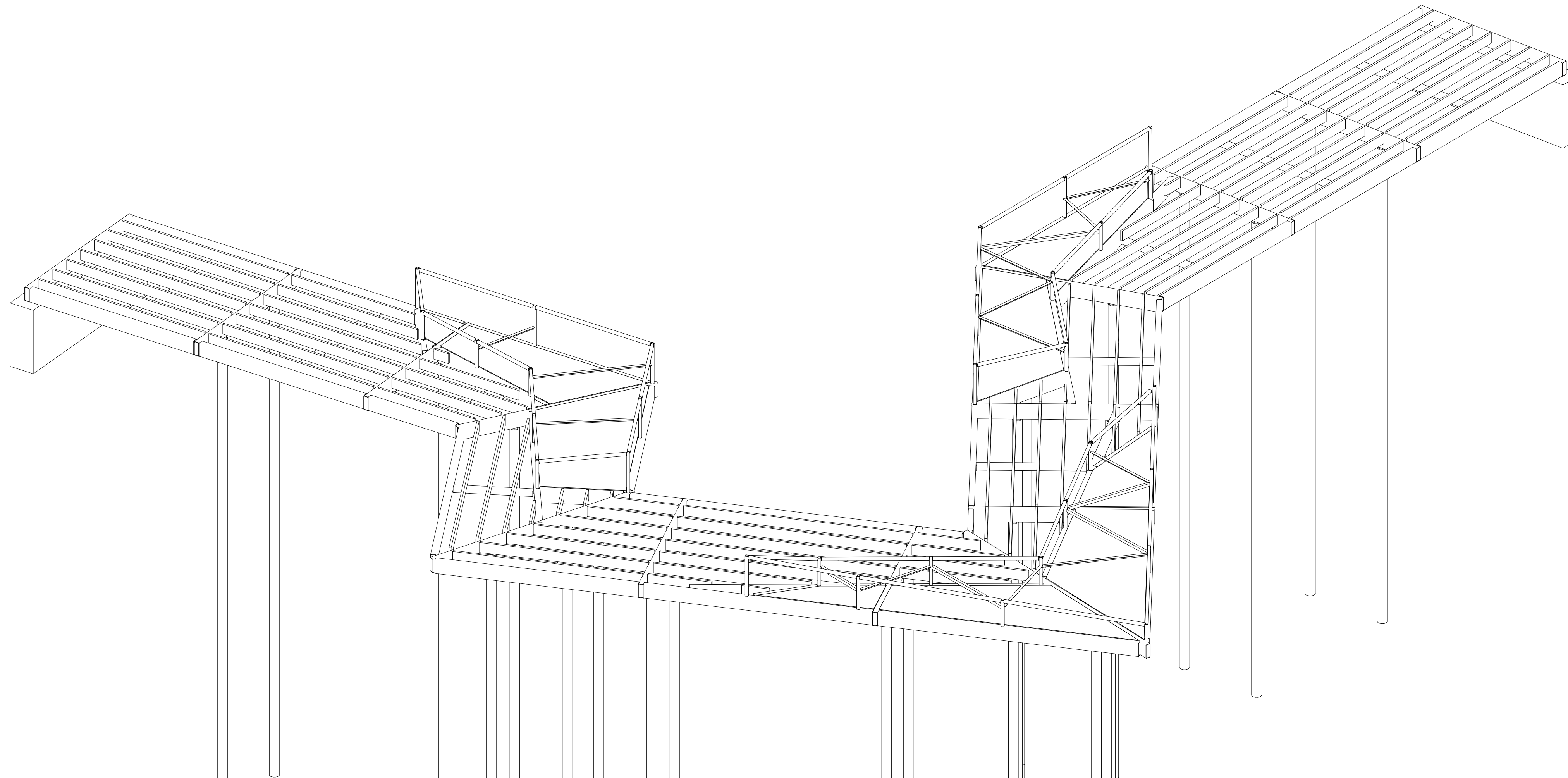
F

1

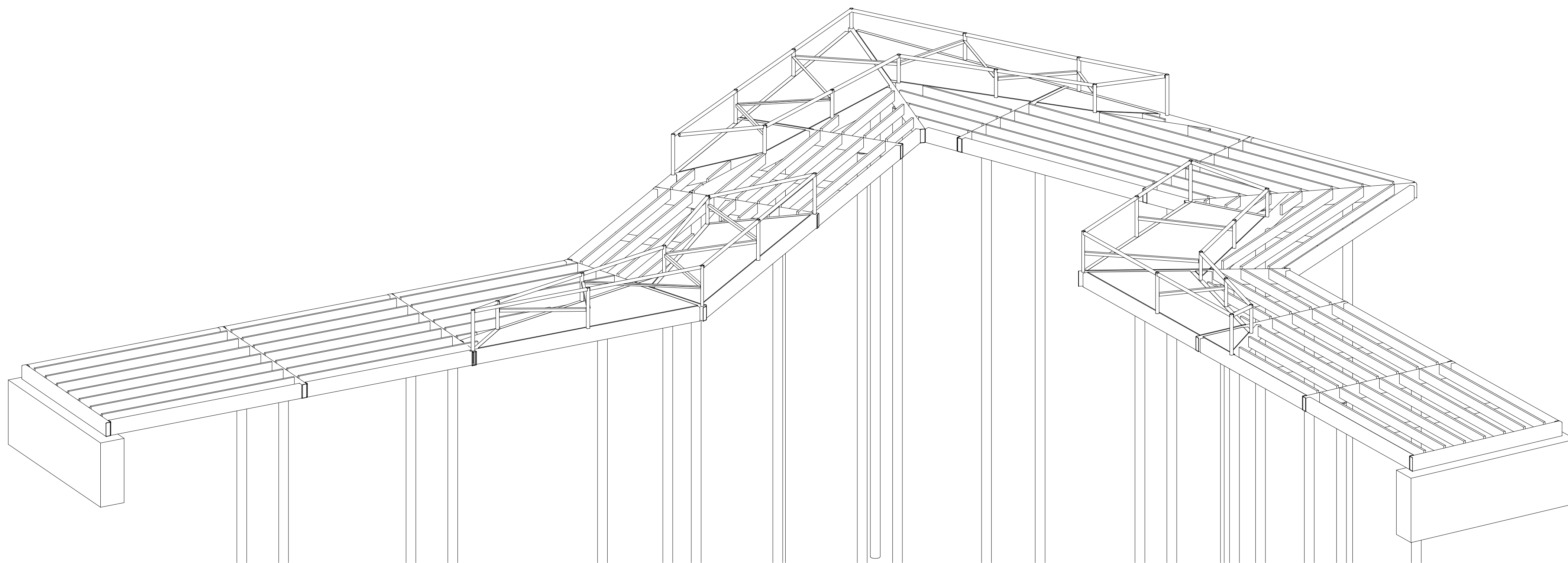
2

3

4



A3 3D VIEW FROM SOUTH
NOT TO SCALE



A4 3D VIEW FROM NORTH

A

B

C

D

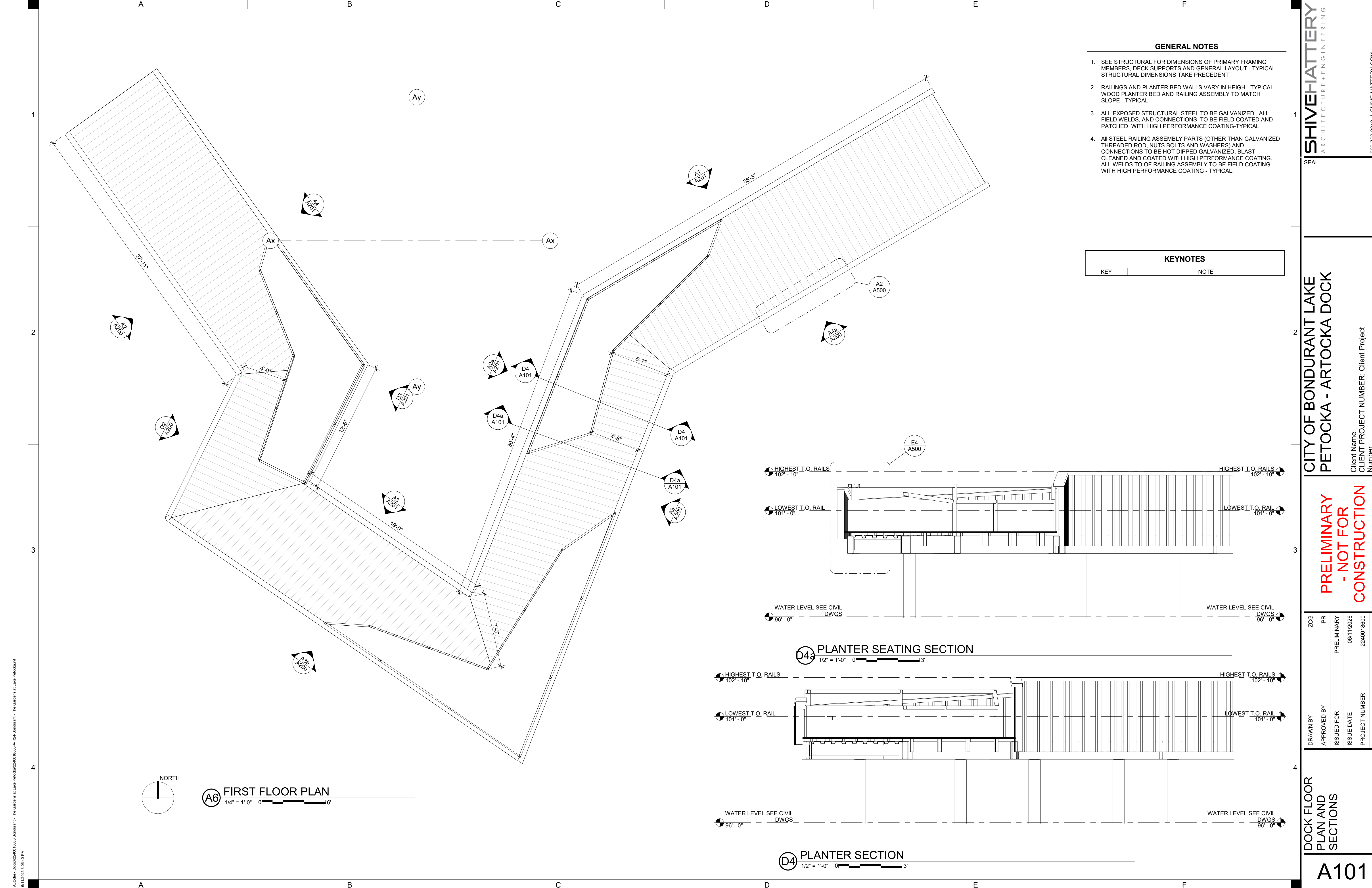
E

F

Autodesk Doc: /2240018600/Bondurant - The Gardens at Lake Petocka - The Gardens at Lake Petocka.rvt
 06/11/2025 2:38:37 PM
 Autodesk Revit 2024

**PRELIMINARY
- NOT FOR
CONSTRUCTION**

DRAWN BY	Author
APPROVED BY	Approver
ISSUED FOR	PRELIMINARY
ISSUE DATE	06/11/2025
PROJECT NUMBER	2240018600
FIELD BOOK	



GENERAL NOTES

- SEE STRUCTURAL FOR DIMENSIONS OF PRIMARY FRAMING MEMBERS, DECK SUPPORTS AND GENERAL LAYOUT - TYPICAL. STRUCTURAL DIMENSIONS TAKE PRECEDENT
- RAILINGS AND PLANTER BED WALLS VARY IN HEIGHT - TYPICAL. WOOD PLANTER BED AND RAILING ASSEMBLY TO MATCH SLOPE - TYPICAL
- ALL EXPOSED STRUCTURAL STEEL TO BE GALVANIZED. ALL FIELD WELDS, AND CONNECTIONS TO BE FIELD COATED AND PATCHED WITH HIGH PERFORMANCE COATING-TYPICAL
- ALL STEEL RAILING ASSEMBLY PARTS (OTHER THAN GALVANIZED THREADED ROD, NUTS BOLTS AND WASHERS) AND CONNECTIONS TO BE HOT DIPPED GALVANIZED, BLAST CLEANED AND COATED WITH HIGH PERFORMANCE COATING. ALL WELDS TO OF RAILING ASSEMBLY TO BE FIELD COATING WITH HIGH PERFORMANCE COATING - TYPICAL.

KEYNOTES

KEY	NOTE
-----	------

**PRELIMINARY
- NOT FOR
CONSTRUCTION**

DRAWN BY	ZCG
APPROVED BY	PR
ISSUED FOR	PRELIMINARY
ISSUE DATE	06/11/2026
PROJECT NUMBER	2240018600
FIELD BOOK	Field Book

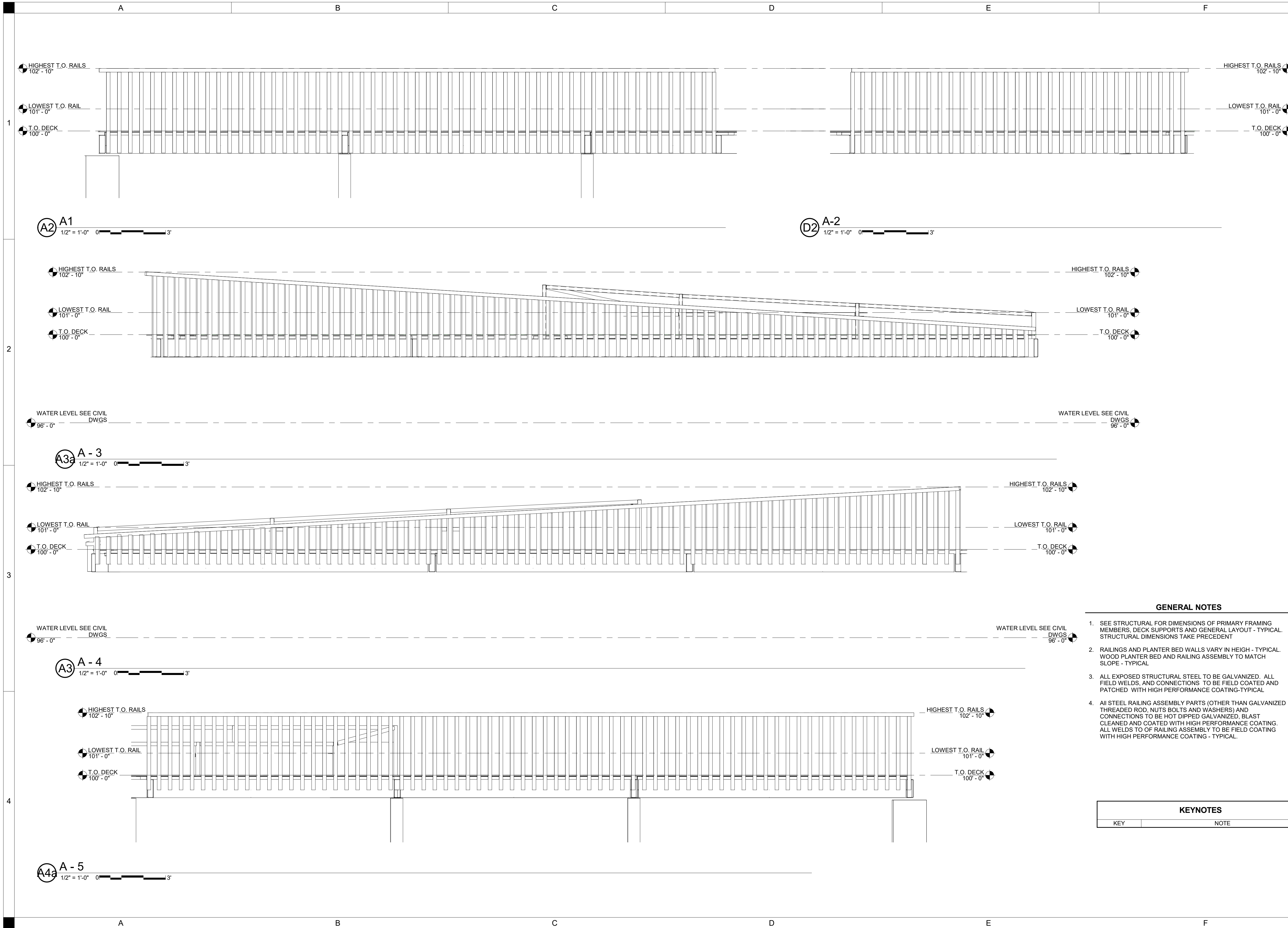
Autodesk Doc: 2240018600 Bondurant - The Gardens at Lake Petocka 2240018600.A101-DOCK FLOOR PLAN - The Gardens at Lake Petocka.rvt
6/11/2026 3:08:40 PM

**PRELIMINARY
- NOT FOR
CONSTRUCTION**

DRAWN BY	Author
APPROVED BY	Approver
ISSUED FOR	PRELIMINARY
ISSUE DATE	06/11/2026
PROJECT NUMBER	2240018600
FIELD BOOK	Field Book

EXTERIOR
ELEVATIONS

A200

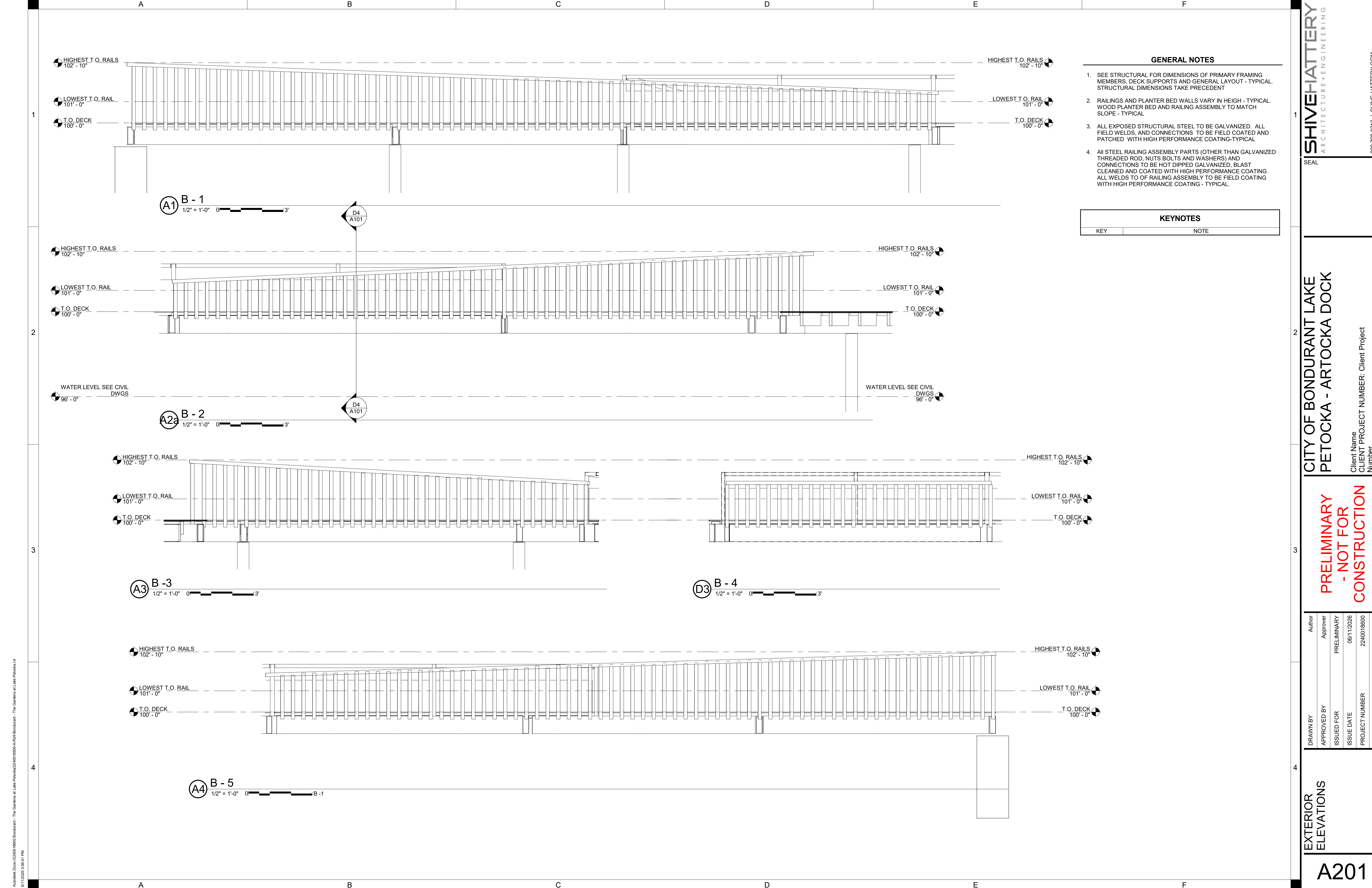


GENERAL NOTES

- SEE STRUCTURAL FOR DIMENSIONS OF PRIMARY FRAMING MEMBERS, DECK SUPPORTS AND GENERAL LAYOUT - TYPICAL. STRUCTURAL DIMENSIONS TAKE PRECEDENT
- RAILINGS AND PLANTER BED WALLS VARY IN HIGH - TYPICAL. WOOD PLANTER BED AND RAILING ASSEMBLY TO MATCH SLOPE - TYPICAL
- ALL EXPOSED STRUCTURAL STEEL TO BE GALVANIZED. ALL FIELD WELDS, AND CONNECTIONS TO BE FIELD COATED AND PATCHED WITH HIGH PERFORMANCE COATING-TYPICAL
- ALL STEEL RAILING ASSEMBLY PARTS (OTHER THAN GALVANIZED THREADED ROD, NUTS BOLTS AND WASHERS) AND CONNECTIONS TO BE HOT DIPPED GALVANIZED, BLAST CLEANED AND COATED WITH HIGH PERFORMANCE COATING. ALL WELDS TO OF RAILING ASSEMBLY TO BE FIELD COATING WITH HIGH PERFORMANCE COATING - TYPICAL.

KEYNOTES

KEY	NOTE



- GENERAL NOTES**
- SEE STRUCTURAL FOR DIMENSIONS OF PRIMARY FRAMING MEMBERS, DECK SUPPORTS AND GENERAL LAYOUT - TYPICAL. STRUCTURAL DIMENSIONS TAKE PRECEDENT
 - RAILINGS AND PLANTER BED WALLS VARY IN HEIGHT - TYPICAL. WOOD PLANTER BED AND RAILING ASSEMBLY TO MATCH SLOPE - TYPICAL
 - ALL EXPOSED STRUCTURAL STEEL TO BE GALVANIZED. ALL FIELD WELDS, AND CONNECTIONS TO BE FIELD COATED AND PATCHED WITH HIGH PERFORMANCE COATING-TYPICAL
 - ALL STEEL RAILING ASSEMBLY PARTS (OTHER THAN GALVANIZED THREADED ROD, NUTS BOLTS AND WASHERS) AND CONNECTIONS TO BE HOT DIPPED GALVANIZED, BLAST CLEANED AND COATED WITH HIGH PERFORMANCE COATING. ALL WELDS TO OF RAILING ASSEMBLY TO BE FIELD COATING WITH HIGH PERFORMANCE COATING - TYPICAL.

KEYNOTES

KEY	NOTE

**PRELIMINARY
- NOT FOR
CONSTRUCTION**

DRAWN BY	Author
APPROVED BY	Approver
ISSUED FOR	PRELIMINARY
ISSUE DATE	06/11/2026
PROJECT NUMBER	2240018600
FIELD BOOK	Field Book

Autodesk Doc: 2240018600 Bondurant - The Gardens at Lake Petocka - The Gardens at Lake Petocka.rvt
6/11/2025 3:06:41 PM



Park & Rec Event Report

Name of Event: Youth Fishing Derby

Date: 6/6/25

Time: 5-6p

Attendance: 58 kids, 56 adults

Volunteers: Tyler Stubbs, BF FFA Students

Equipment & Supplies: Bluetooth speaker, bottled water, ice, swag bag that included: goldfish crackers/Swedish fish (allergen alternative), bubbles, Fish Iowa sticker, mini tackle, chapstick. Big Prizes: Fishing poles, tackle box, Buffalo Wild Wings Go gift card, Casey's gift card, Playground for Kids pass, movie theater pass

Budget:

Fees: Free

Revenue: \$0

Expenses: Fishing Poles: \$52.93, Mini Tackle Kits: \$107.99, Snacks: \$52.57

Donations:

\$250 sponsorship from Midstates Precast Products, \$100 sponsorship from Bondurant Civic Club, \$100 sponsorship from Bondurant Men's Club, movie passes, Playground for Kids passes, Buffalo Wild Wings Go gift cards

Advertisement:

The Bounce

Website

Socials

Bondurant Living Magazine

LinkedIn

Lessons Learned: Tried the new Friday night time frame and received many positive comments. We also had more kids than we've had in previous years. I also handed out the swag bags at the beginning at check-in, which was very helpful for the kids that had to leave for sports or other activities. The Mayor came out to hand out the awards, which was a great final touch. Also, the kids stayed engaged in the activity the entire time. In the previous year, there were many kids who had stopped fishing and started playing on the playground. It was great to see so many kids engaged in the activity! We lost out on a major sponsor, Bass Pro Shop, which did impact the prizes and swag we were able to hand out.



Park & Rec Event Report

Name of Event: Rails2Trail 1k, 5k, 10k

Date: 6/7/25

Time: 9a-11a

Attendance: 31 adults, 6 kids

Volunteers: Marian Collison, Colton & Shelby Hagan, Isaac Pezley

Equipment & Supplies: Bluetooth speaker, bottled water, ice, swag bag that included: hot/cold packs, pens, coupons to local businesses, tshirt, patch, medal, hydration packet

Budget:

Fees: \$35 5k/10k, \$15/1k

Revenue: \$1,070

Expenses: Tshirts: \$1505.50, Patches: \$252.79, Medals: \$546, Race Timing: Estimated at \$650

Donations: \$500 sponsorship from Midstates Precast Products, \$50 sponsorship from Bondurant Men’s Club, Rooted Family Chiropractic, Axis Therapy Center, A-Team Apparel, Bondurant Chiropractic, Elite Health & Performance, Select PT, Iowa Barnstormers, Iowa Cubs, Fareway, Iowa Buccaneers, Iowa Wild,

Advertisement:

The Bounce

Website

Socials

Bondurant Living Magazine

LinkedIn

Lessons Learned: We found out unexpectedly and late in the game that Live Healthy Iowa was not going to be doing the 1k/5k that they have done for a number of years here in Bondurant. We decided that we were still going forward with the race. This created some unexpected expenses as seen above. In the past, Live Healthy has provided some of the more expensive pieces of the race – tshirts and medals. Because of this unforeseen I was also unable to adjust the sponsorship levels to help offset the higher investment this year. Next year, we will definitely need to increase our fundraising/sponsorships.

Silver linings to Live Healthy discontinuing their participation:

- We added a 10k option. 10k races are not very common so as this event grows, we should be able to entice runners to our event.
- We added a mascot race, which was a TON of fun! We definitely will be continuing this!
- We were able to be more intentional with the branding of this event, tying it closer to Bondurant.

Big shoutout to those businesses and people who stepped up to make this event happen – Stef at Founder’s Irish Pub opened up early to help accommodate the potential higher number of people that would be interested in breakfast. Public Works did an amazing job helping with logistics and keeping everyone safe as they crossed streets. Thanks to our volunteers! With this being organized differently this year, it was really great to be able to depend on them to keep our runners hydrated!